

U 96

U-BOAT

Pack 34

Assembly Instructions

Kit 133: The upper deck (III)

Kit 134: The upper deck (IV)

Kit 135: Conning tower assembly

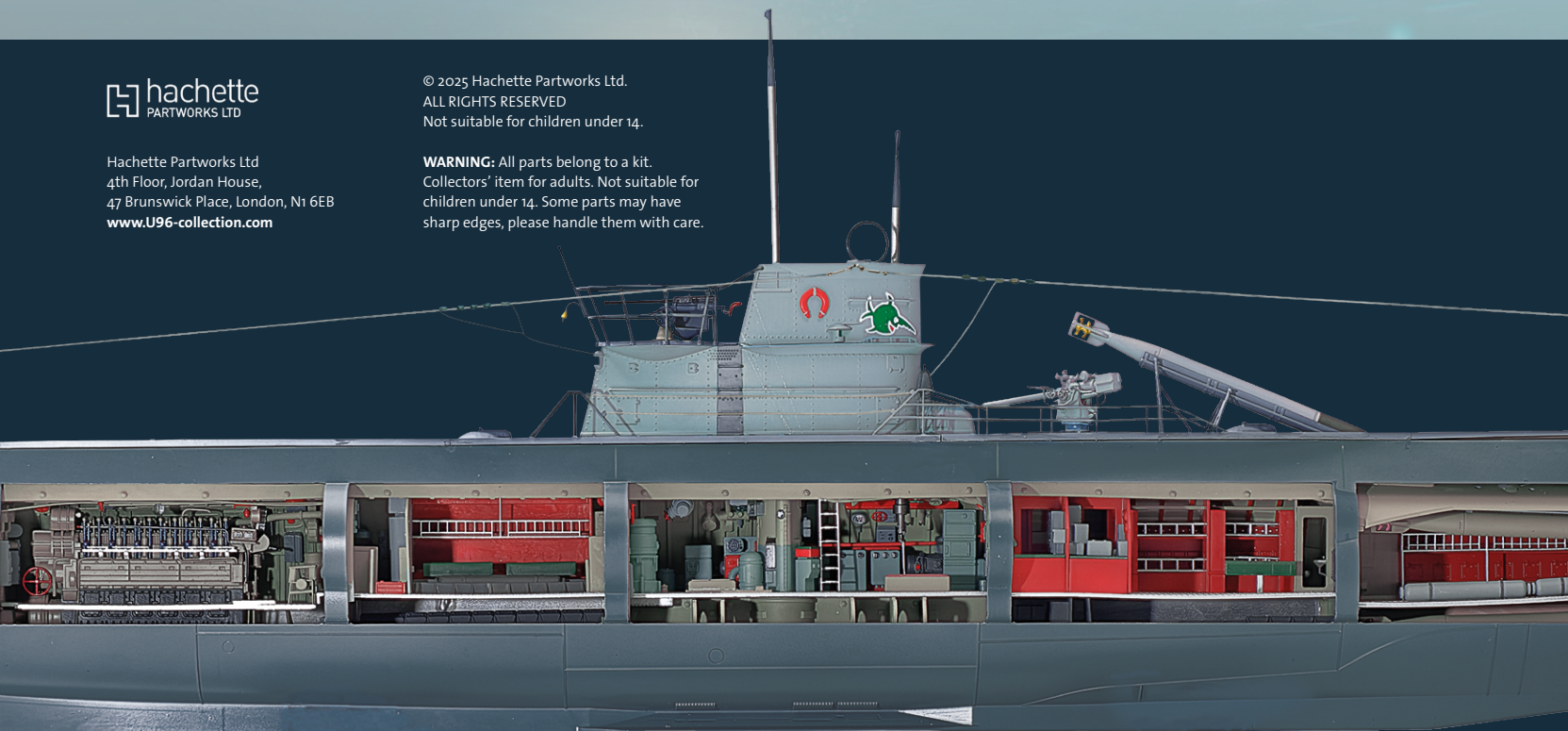
Kit 136: The 'Eight-Eight'



Hachette Partworks Ltd
4th Floor, Jordan House,
47 Brunswick Place, London, N1 6EB
www.U96-collection.com

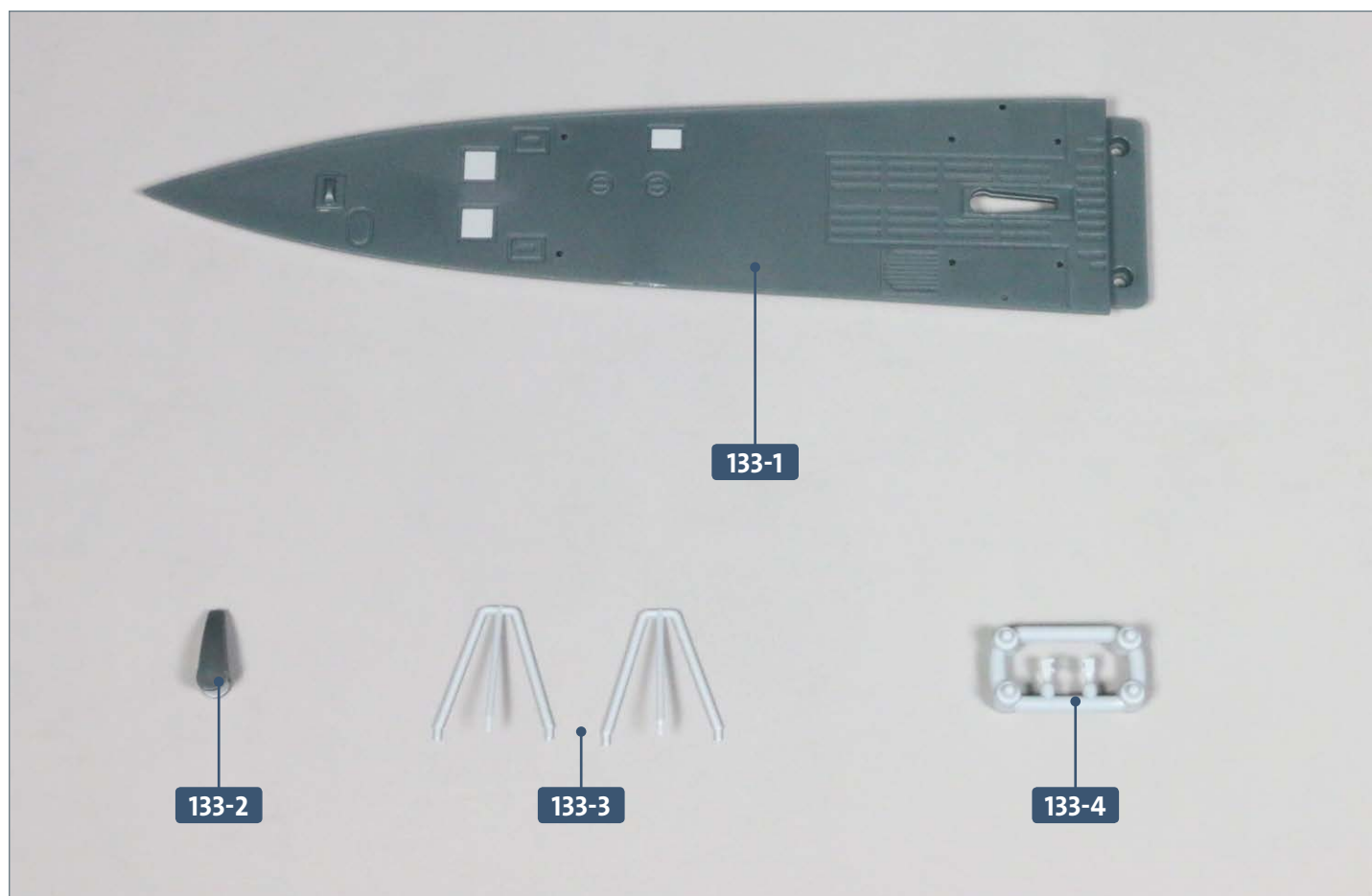
© 2025 Hachette Partworks Ltd.
ALL RIGHTS RESERVED
Not suitable for children under 14.

WARNING: All parts belong to a kit.
Collectors' item for adults. Not suitable for
children under 14. Some parts may have
sharp edges, please handle them with care.



Kit 133: The upper deck (III)

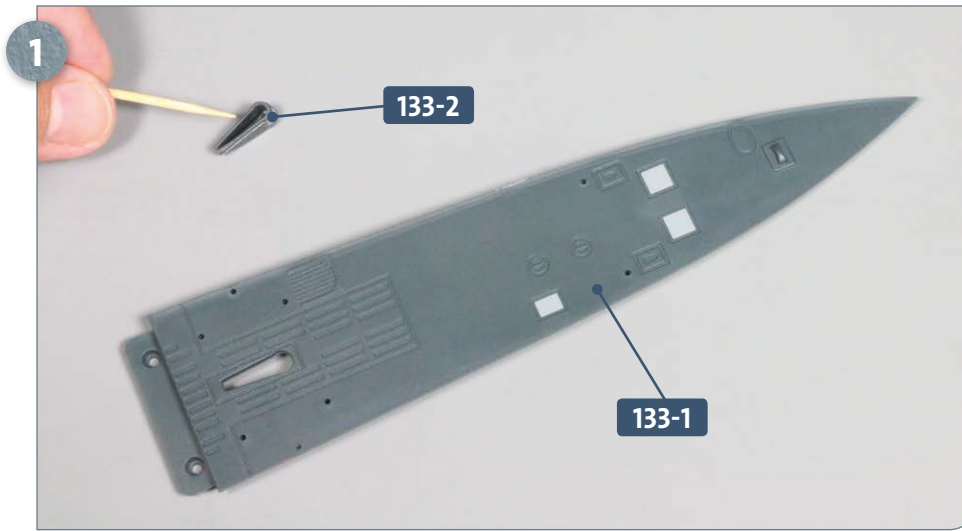
In this kit, two trestles and the stern navigation light are mounted on the stern section of the upper deck.



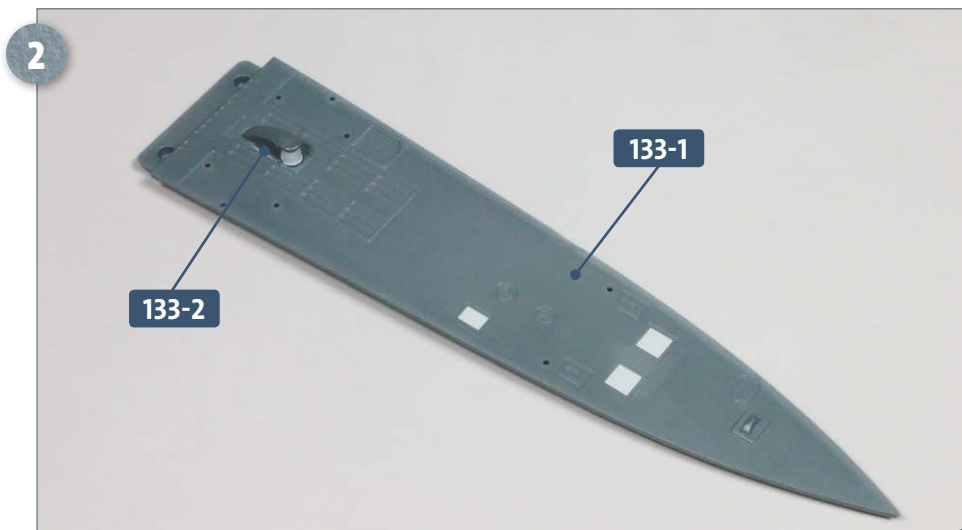
Parts reference list	
Part no.	Name
133-1	Stern section, upper deck
133-2	Stern navigation light
133-3	Trestles for net reflector antenna
133-4	Aft antenna mounts

Kit 133: The upper deck (III)

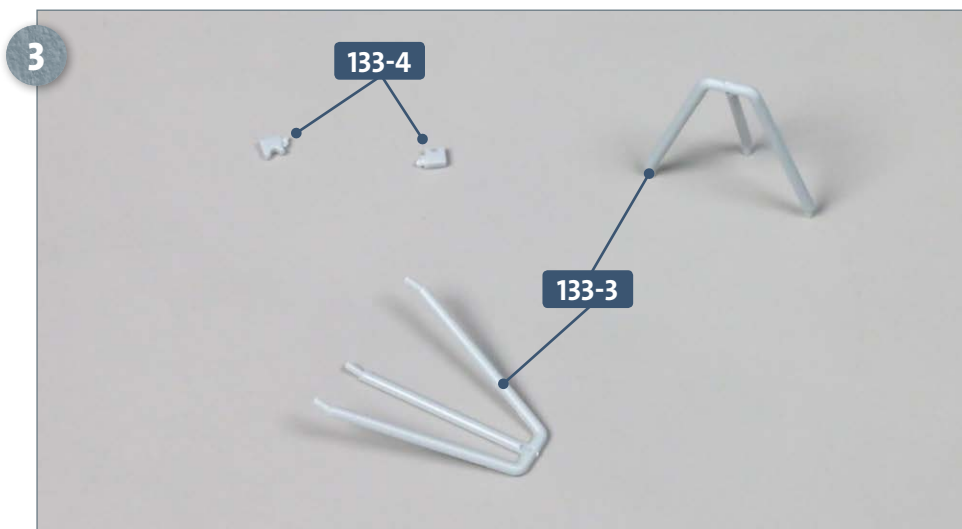
STAGE 1 → Mounting the stern navigation light and trestles



Place the stern section of the upper deck **133-1** on your work surface. Take the stern navigation light **133-2** and apply a little glue to the lower edge, as pictured.



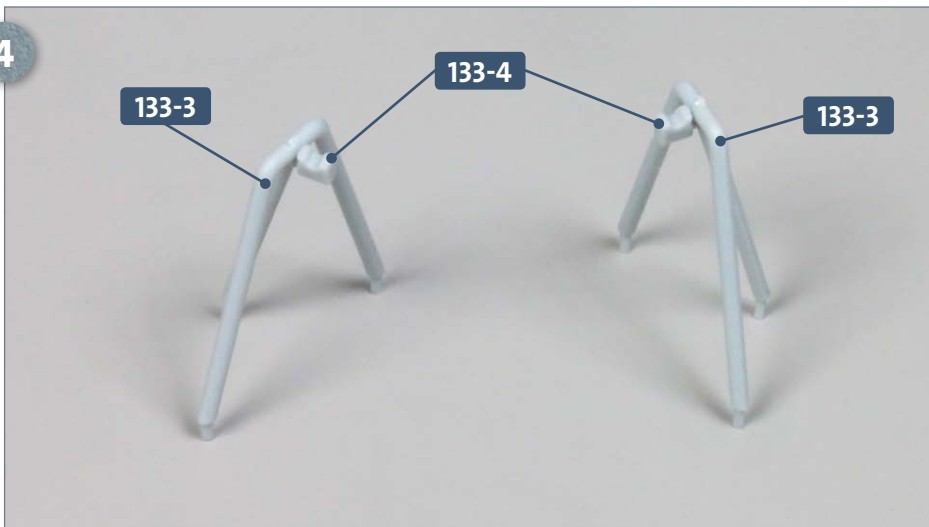
Fit the stern navigation light **133-2** into the conical recess in the stern section of the upper deck **133-1**.



Prepare the two trestles for the net reflector antenna **133-3**. Separate the two aft antenna mounts **133-4** from the frame and smooth away any remnants of the connecting framework.

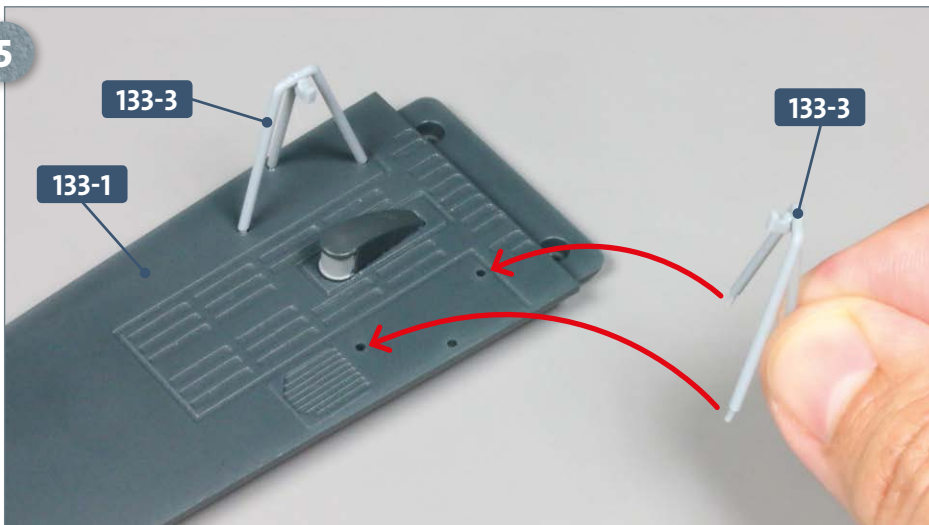
Kit 133: The upper deck (III)

4



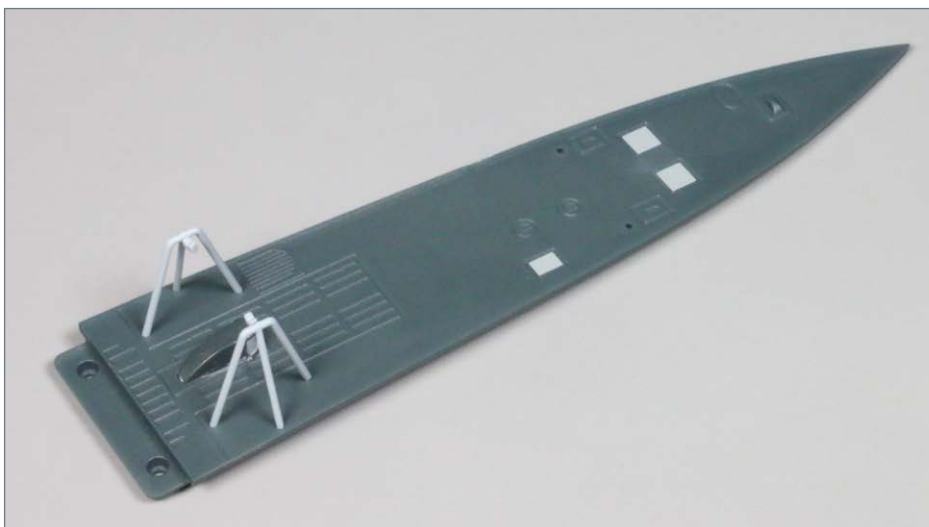
Apply some glue to the small peg of each of the antenna mounts **133-4**, then insert into the corresponding recesses in the two trestle supports **133-3**, as pictured.

5



Apply some glue to the three feet of each trestle **133-3** before inserting them into the corresponding holes on either side of the stern upper deck section **133-1**.

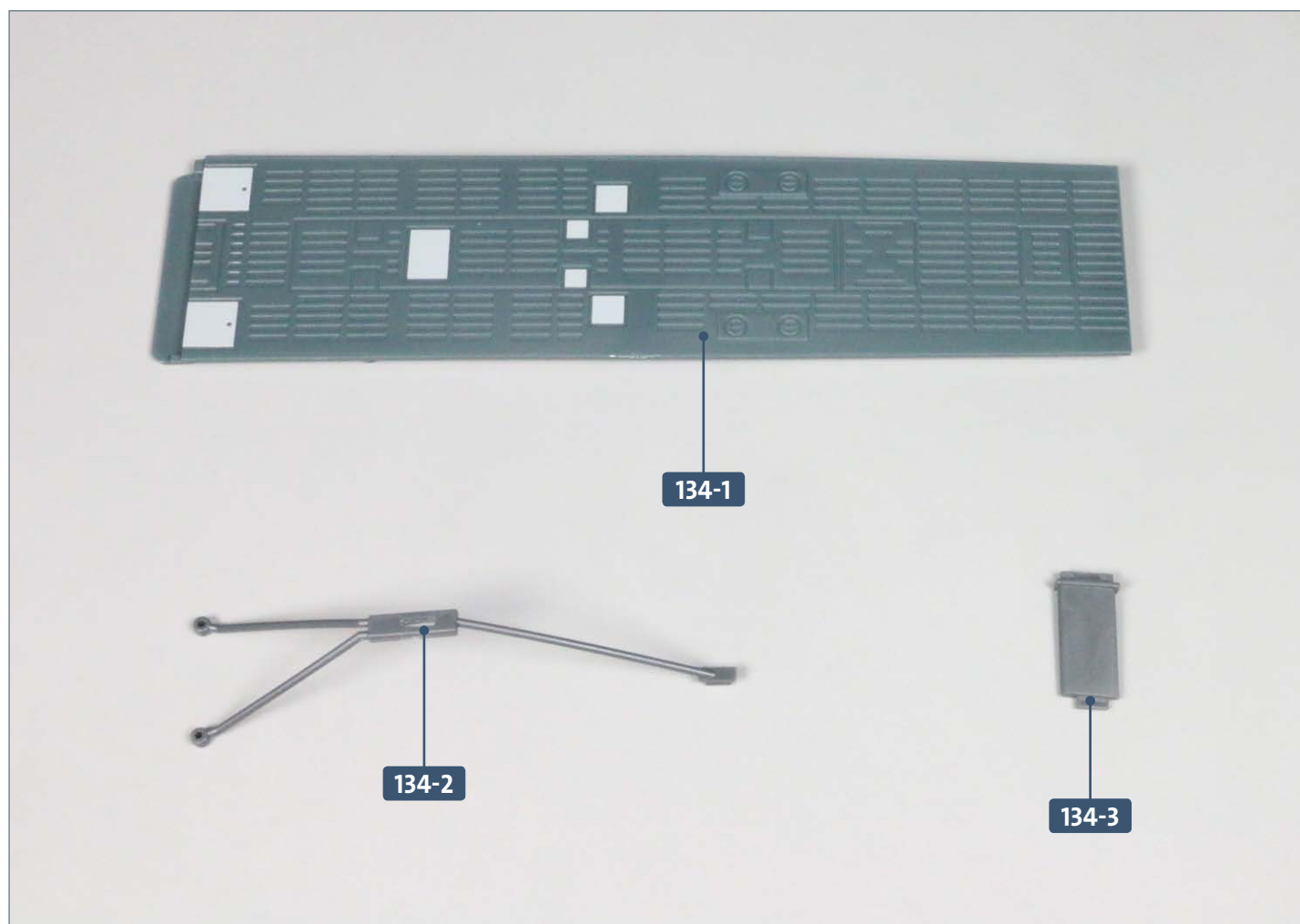
COMPLETED WORK



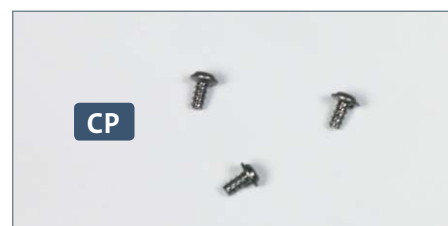
Two trestles and the stern navigation light have now been mounted onto the stern section of the upper deck.

Kit 134: The upper deck (IV)

In this kit, the rudder hook is connected to the deflector rods before being attached to the stern of the model. The aft deck is then screwed onto the stern section of the upper deck.

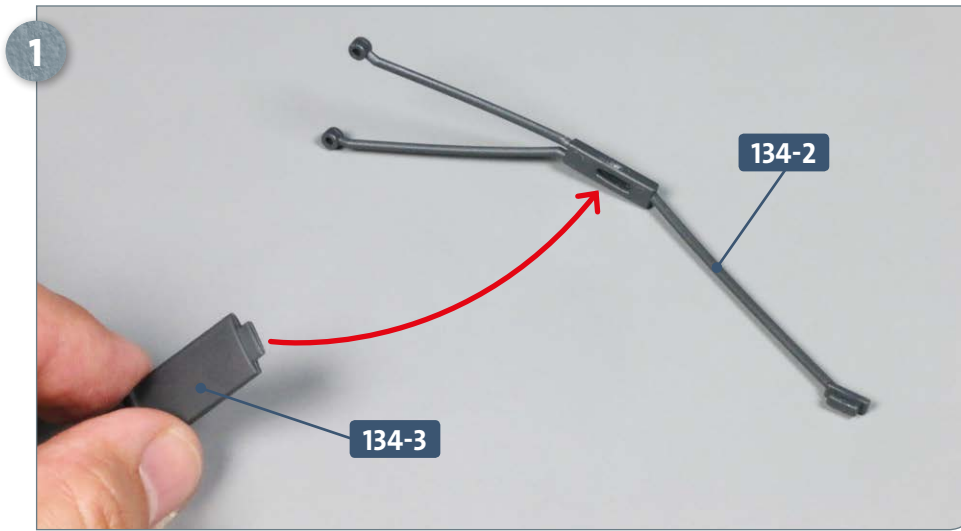


Parts reference list	
Part no.	Name
134-1	Aft deck
134-2	Deflector rods
134-3	Rudder hook

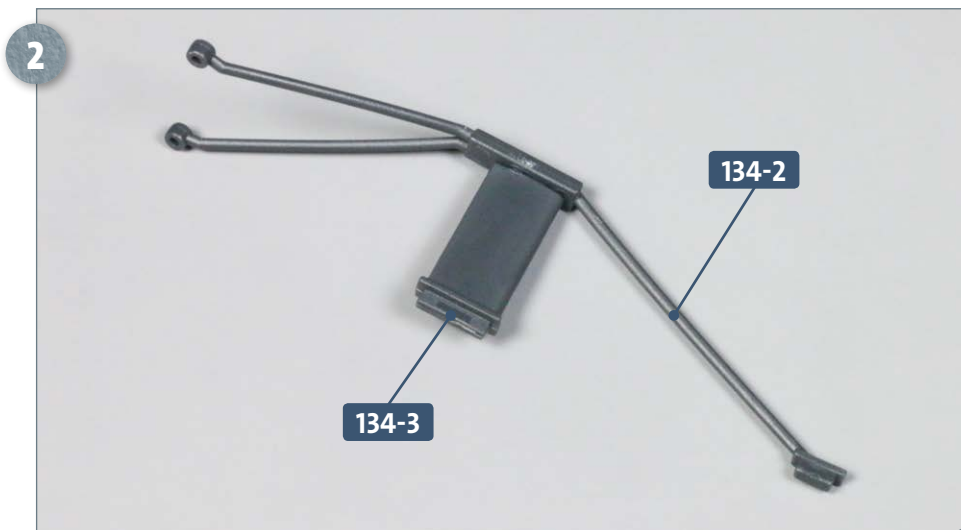


Screws		
Ref	No.	Dimensions
CP	2 + 1	2 x 4 mm

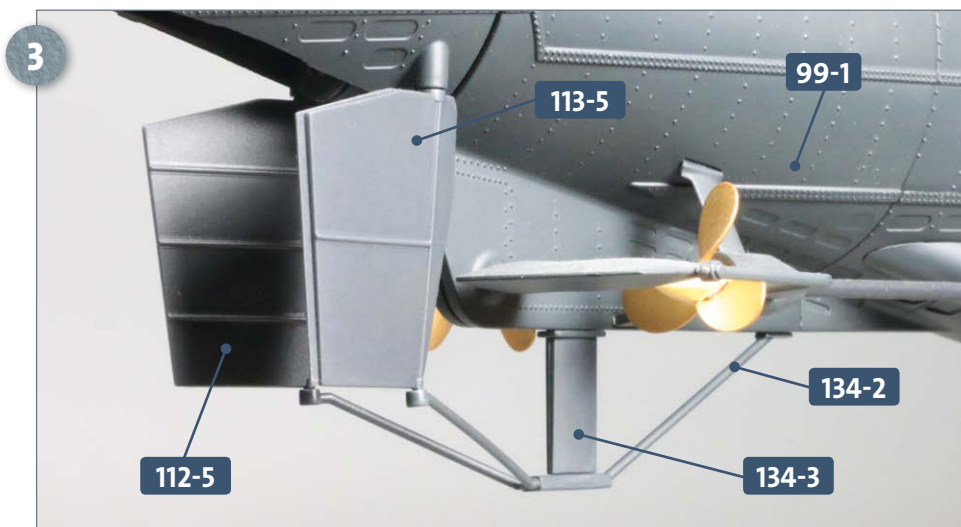
STAGE 1 → Attaching the rudder hook



Place the deflector rods **134-2** on your work surface, aligned as shown. Take the rudder hook **134-3**, apply a little glue to the narrower peg, and insert it into the socket of the deflector rod, as indicated by the arrow.



This photograph shows the rudder hook **134-3** correctly attached to the deflector rods **134-2**.

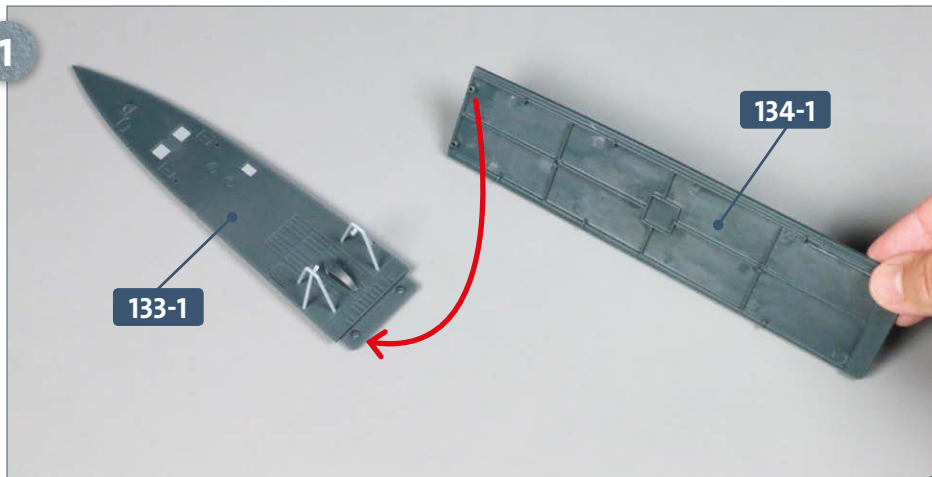


Next, apply a little glue to the wide peg at the front end of the deflector rods **134-2** and to the wider peg at the top end of the rudder hook **134-3**, and insert them into the recesses on the underside of the hull sections **99-1** and **98-1** (not shown). The eyelets at the rear end of the deflector rods will receive the pegs at the ends of the rudders **112-5** and **113-5**. Do not apply glue to these.

Kit 134: The upper deck (IV)

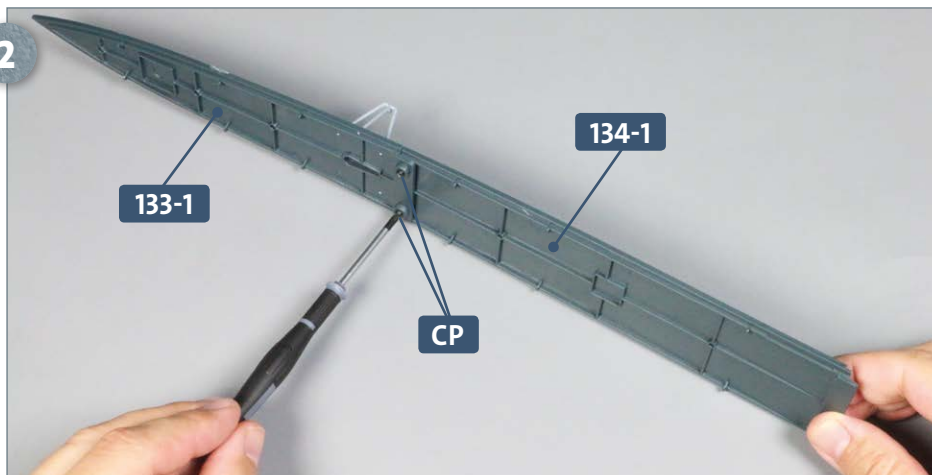
STAGE 2 → Joining the upper deck sections

1



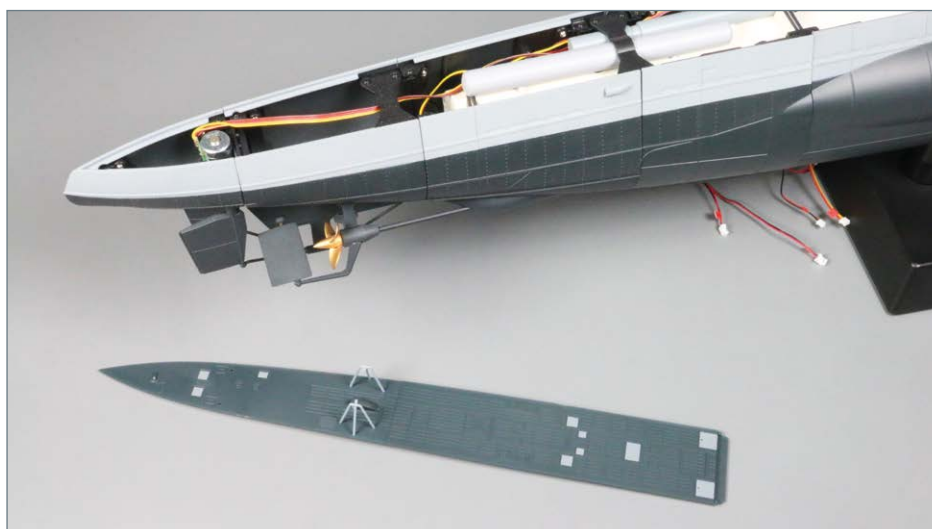
Place the stern section of the upper deck **133-1** on your work surface. Take the aft deck **134-1** and fit its rear end to the front end of the stern section, as indicated by the red arrow. See also step 2 for the correct alignment.

2



Fasten the two deck sections **133-1** and **134-1** together using two **CP** screws.

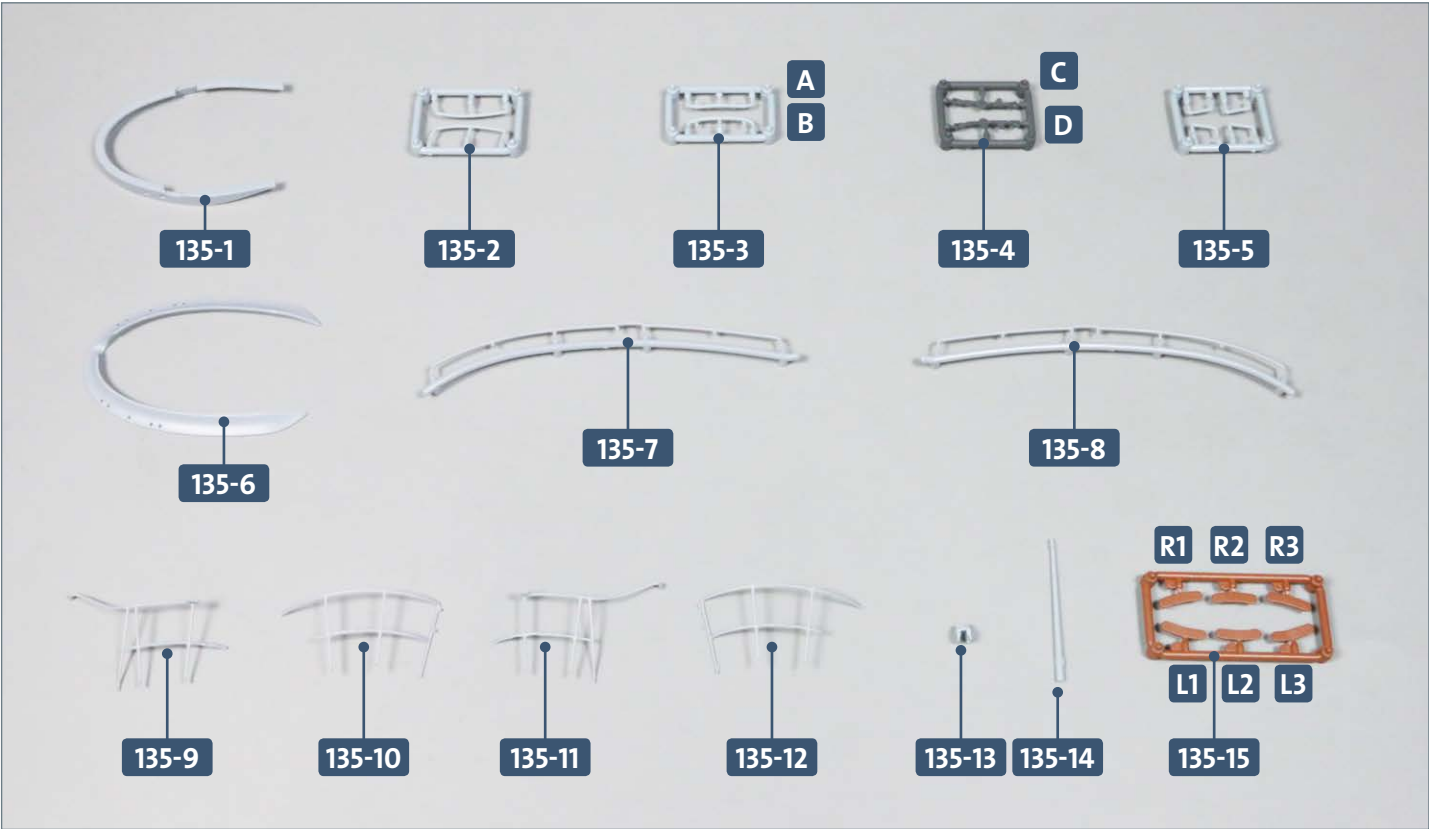
COMPLETED WORK



The two aft sections of the upper deck are now joined together. The rudder hook and deflector rods have also been attached to the stern of the model.

Kit 135: Conning tower assembly

In this kit, you will build two conning tower subassemblies. The conning tower wall is also fitted with various details and the anti-aircraft machine gun is mounted.



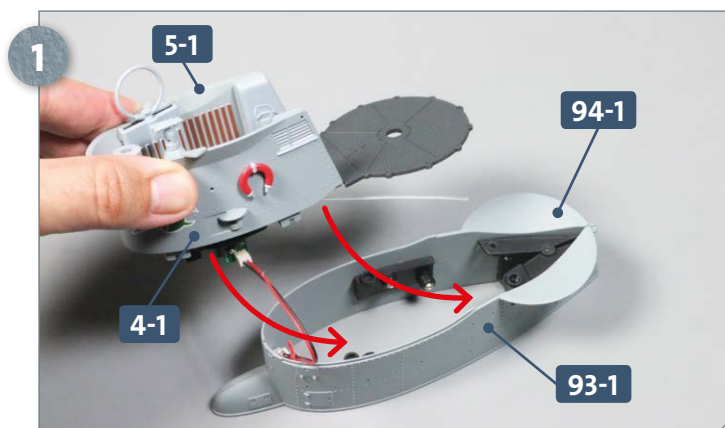
Parts reference list	
Part no.	Name
135-1	Wind deflector
135-2	Two upper handrails
135-3	Two handrails (A, B)
135-4	Two antenna mounts (C, D)
135-5	Four steps
135-6	Breakwater (Collar)
135-7	Port (L) handrail
135-8	Starboard (R) handrail
135-9, 135-10	Two safety rails (port/L)
135-11, 135-12	Two safety rails (starboard/R)
135-13	Flagpole mount
135-14	Flagpole
135-15	Seat for safety rails



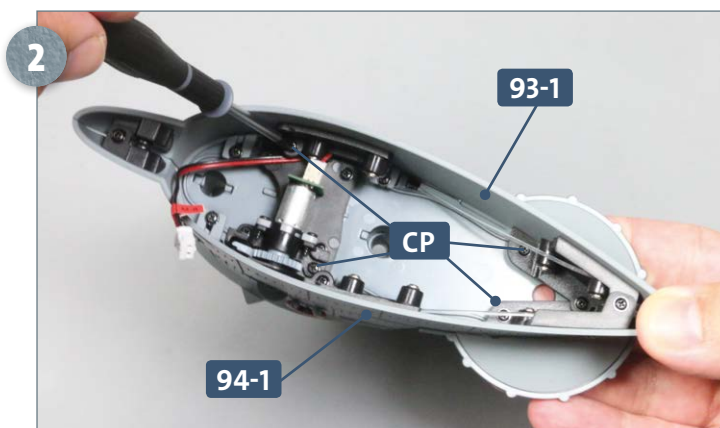
Screws		
Ref	No.	Dimensions
CP	6 + 1	2 x 4 mm

Kit 135: Conning tower assembly

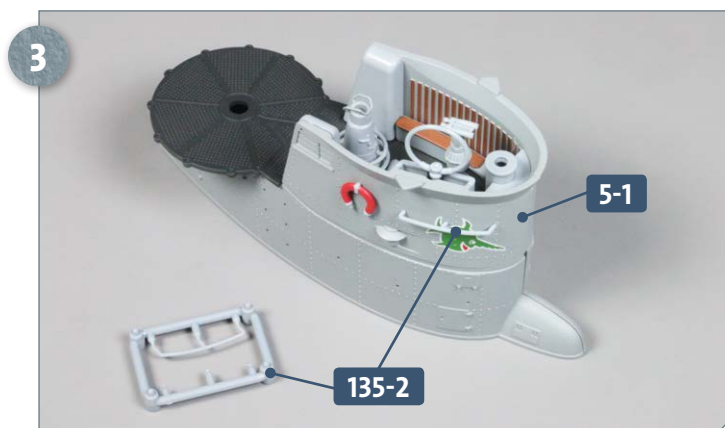
STAGE 1 → The conning tower



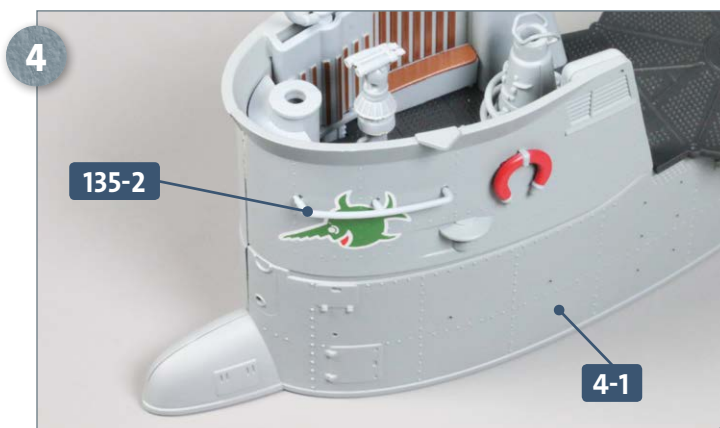
Take the upper half of the conning tower **4-1/5-1** and the lower half **93-1/94-1**: fit the two assemblies together as indicated by the red arrows.



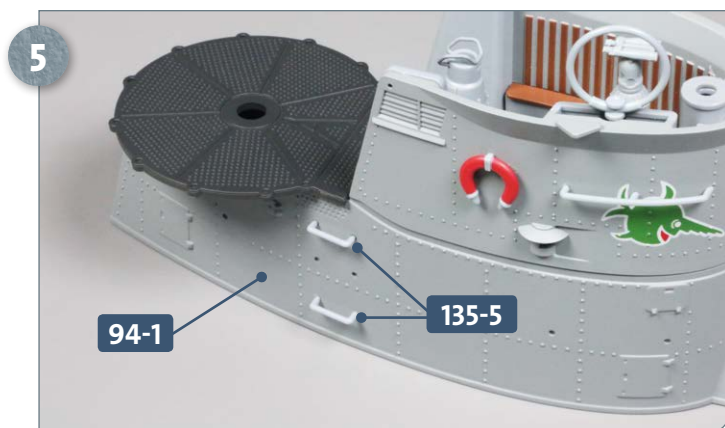
Hold the assembled conning tower together firmly and then screw in four **CP** screws from below, into the holes of the corresponding connectors on the lower halves of the conning tower, **93-1** and **94-1**, as pictured above.



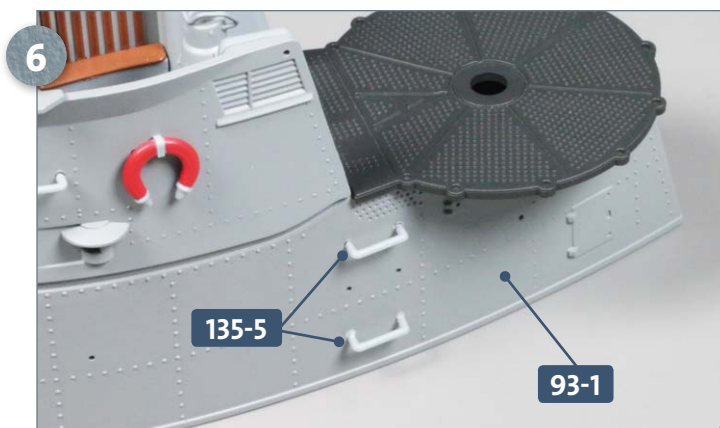
Separate one of the two upper handrails from frame **135-2**. Apply a little glue to the three pegs and insert them into the holes in the bulwark of the starboard (R) side upper conning tower **5-1**.



The second upper handrail **135-2** is glued to the same place on the bulwark of the portside (L) upper conning tower **4-1**.

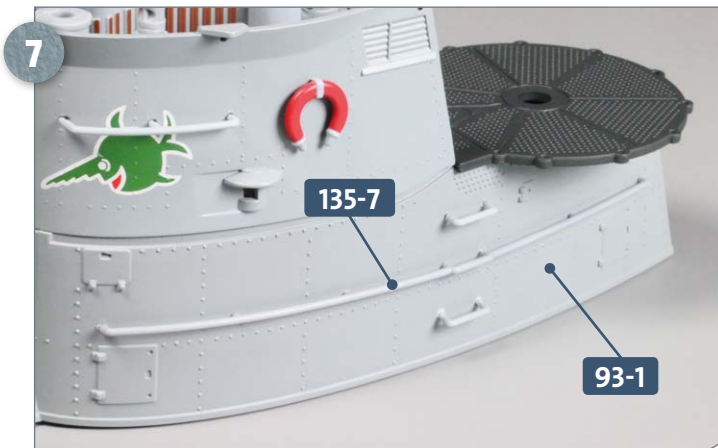


Detach two steps from frame **135-5** and fit them into the holes of the starboard (R) side lower conning tower section **94-1**, as pictured above.

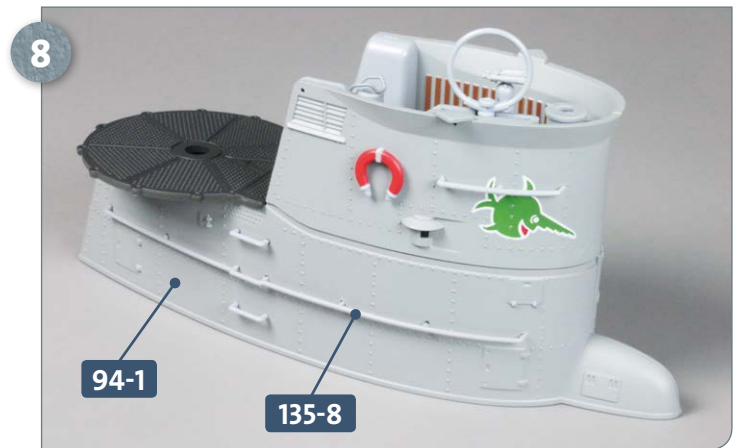


Attach two more steps **135-5** to the lower portside (L) conning tower section **93-1** in a similar position.

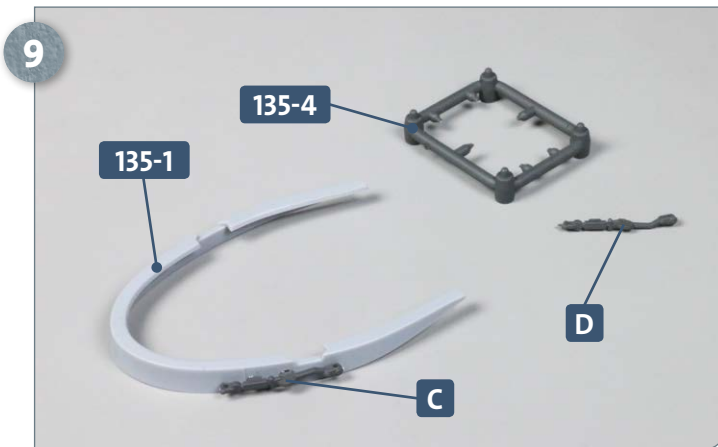
Kit 135: Conning tower assembly



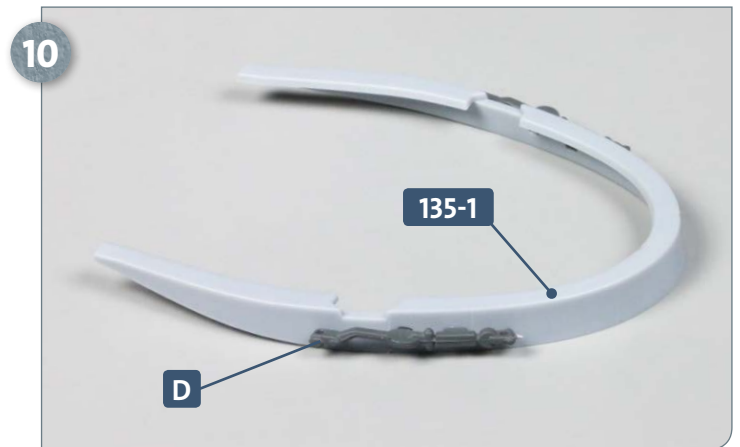
Detach the large port (L) handrail **135-7** from its frame by cutting the four connecting points. Apply some glue to the seven pegs of the handrail and glue them into the corresponding holes in the lower portside (L) conning tower section **93-1**.



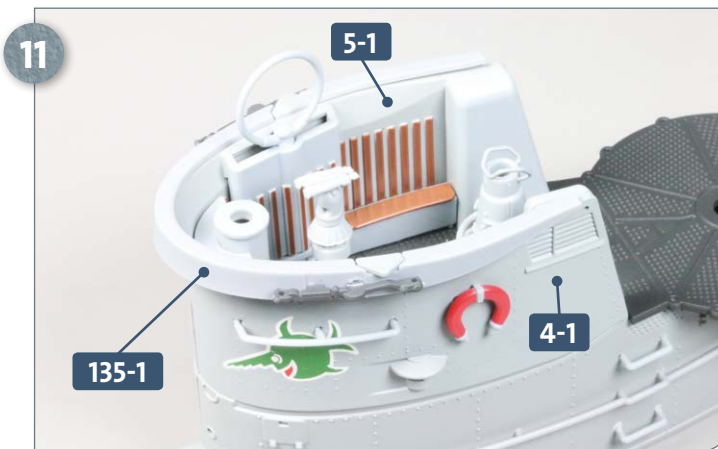
Repeat the previous step for the starboard (R) conning tower section **94-1**: first detach the starboard (R) handrail **135-8** from its frame, apply some glue to the seven pegs, and glue them to the holes along the side of the conning tower, as shown.



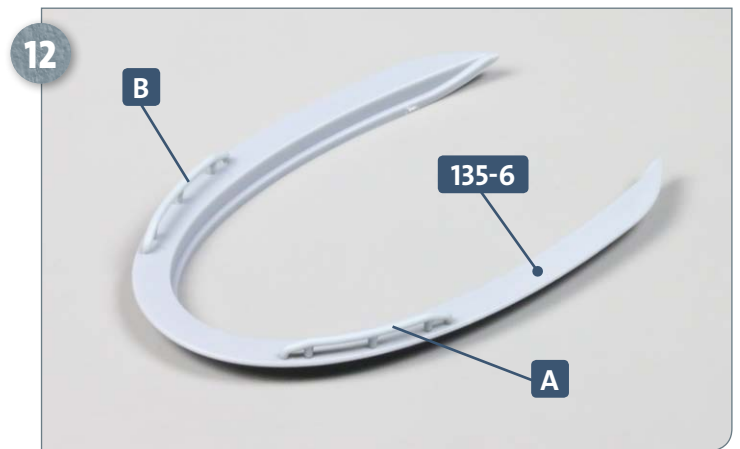
Next, take the wind deflector **135-1** and frame **135-4**. Before detaching the antenna mounts **C** and **D**, study the parts carefully so as not to mix them up. Glue mount **C** to the port (L) side of the wind deflector **135-1**, as shown above.



Glue mount **D** to the starboard (R) side of the wind deflector **135-1**, as pictured.

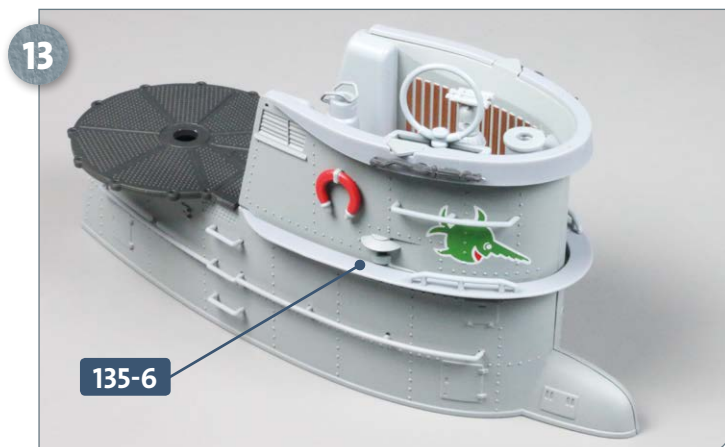


Attach the wind deflector **135-1** to the upper edge of the bulwarks **4-1/5-1**. To do so, gently push the two sides of the deflector apart and slide the part backwards until it stops.

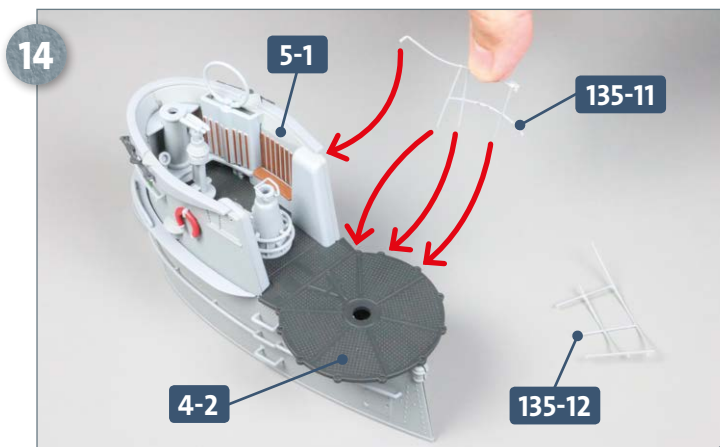


Detach the two handles **A** and **B** from frame **135-3** and glue them to the breakwater **135-6**. Test-fit them before you apply the glue to check which handle belongs on which side.

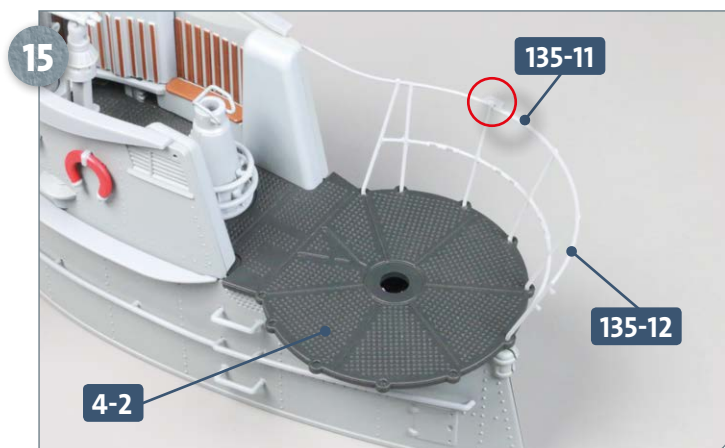
Kit 135: Conning tower assembly



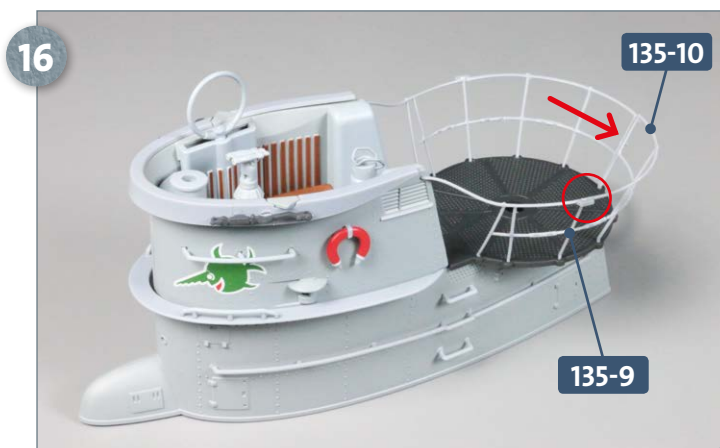
Next, install the breakwater **135-6** in the recess where the two halves of the conning tower join. Read through the next three steps carefully before proceeding.



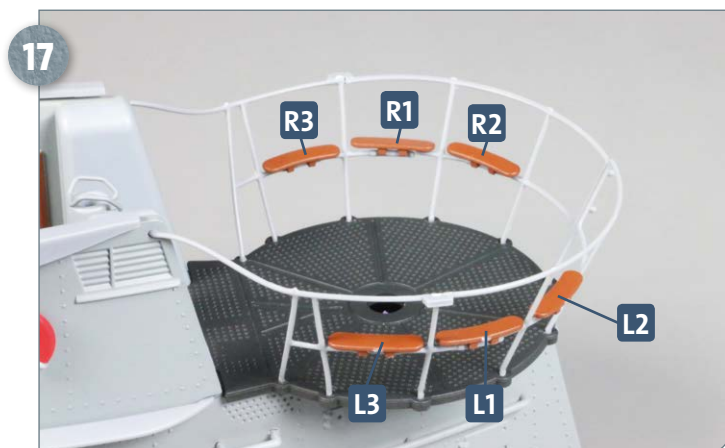
Have ready the two starboard (R) safety railings **135-11** and **135-12**. Apply a small amount of glue to the three feet and angled front end of the forward railing **135-11** and insert into the recesses of the bridge deck **4-2** and bulwark **5-1** respectively, as pictured.



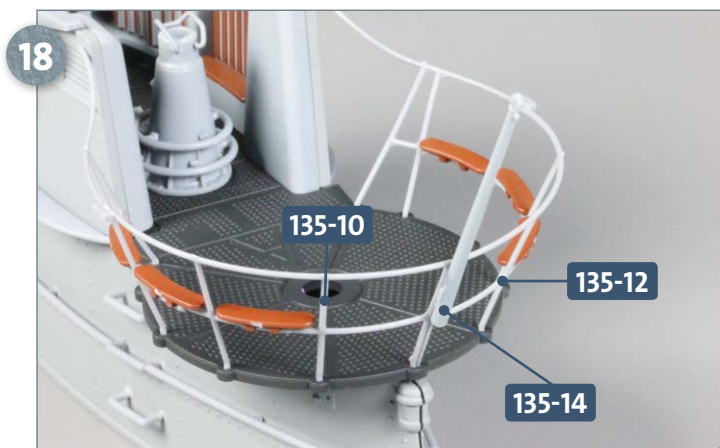
Apply glue to the three feet and two side struts of the aft starboard (R) railing **135-12** and insert them into the supports in the bridge deck **4-2** and the counterparts of railing **135-11**. There is a notch at the end of the upper rail of **135-11** into which the end of rail **135-12** fits (circled).



In the same way, glue the two railings **135-9** and **135-10** on the portside (L). Note that there is a notch in rail **135-9** that receives the end of rail **135-10** (circled). Next, glue the two vertical struts of the two aft railings together at the location indicated by the arrow.

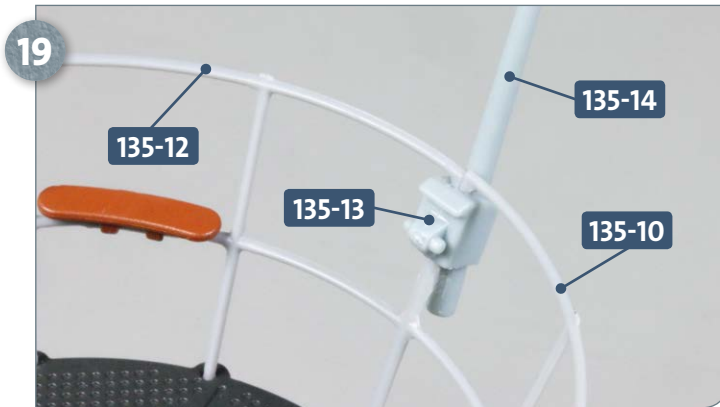


After noting that three seats are labelled left and three are labelled right, detach the seats from frame **135-15** as and when they are needed. Glue them to the crossbars of the safety railings in the arrangement pictured above.

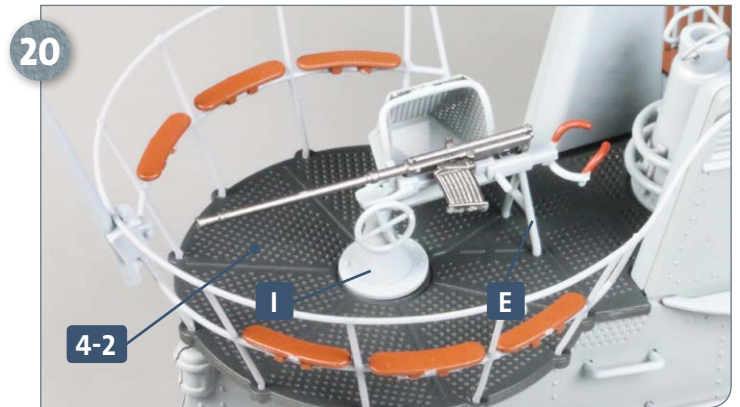


Take the flagpole **135-14** and apply a little glue to the two holes. Glue the pole to the two pegs of railings **135-10** and **135-12**.

Kit 135: Conning tower assembly

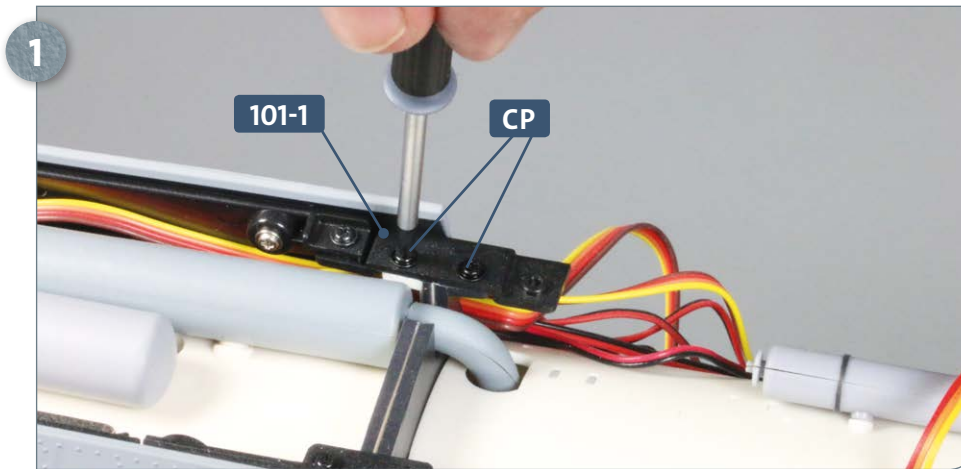


Take the mount **135-13** and glue it to the two vertical struts of railings **135-10** and **135-12**, and to the flagpole **135-14**.



Take the 2cm anti-aircraft gun you assembled in kit 4. Apply some glue to the bipod **E** and the lower carriage **I** and fix them to the bridge deck **4-2**.

STAGE 2 → Attaching a connector



Place your model on your work surface. If you haven't already done so, attach connector **101-1** to the bulkhead of the diesel compartment with two **CP** screws.

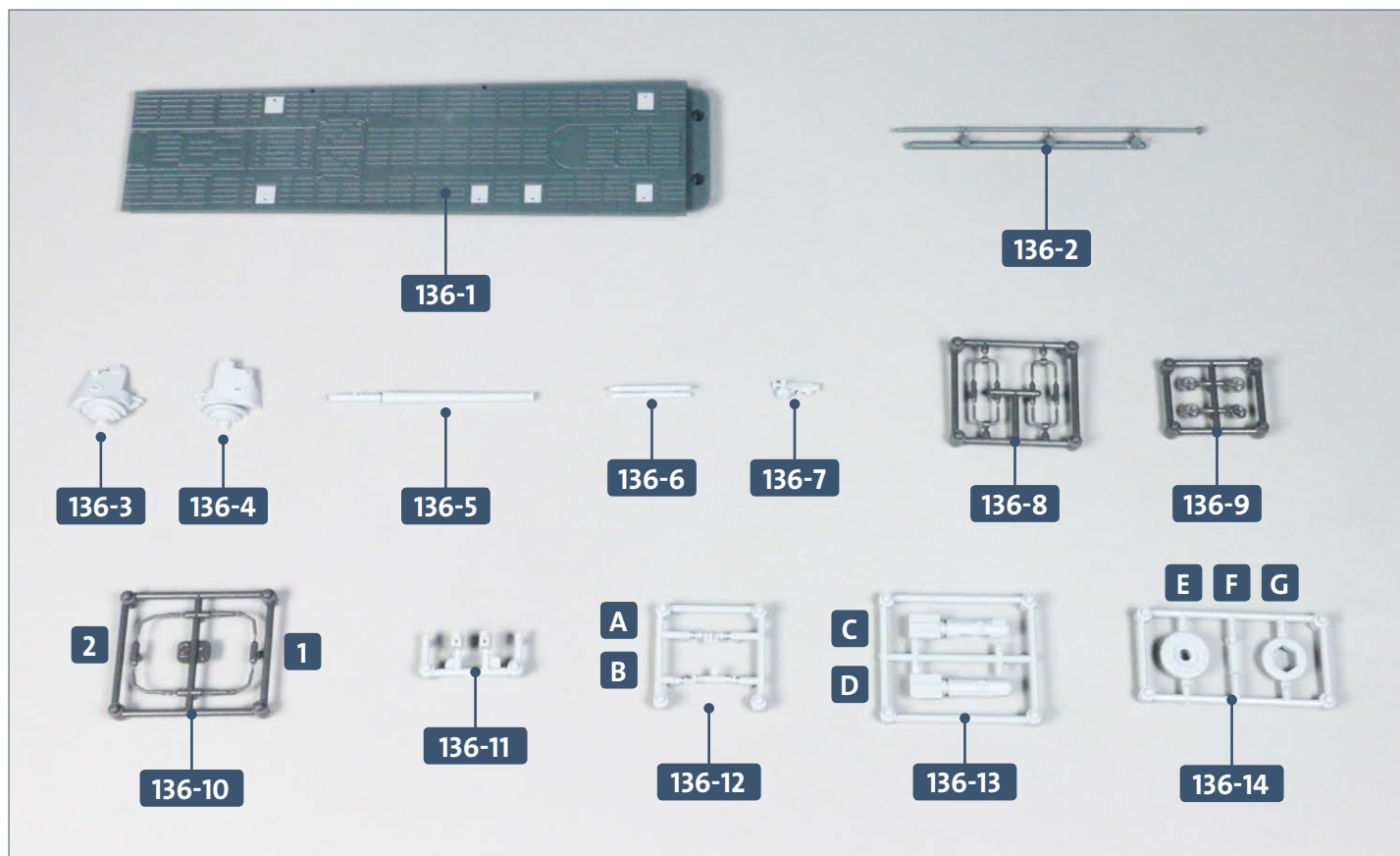
COMPLETED WORK



The conning tower is now largely completed. You will start to attach it to the main model assembly in kit 140.

Kit 136: The 'Eight-Eight'

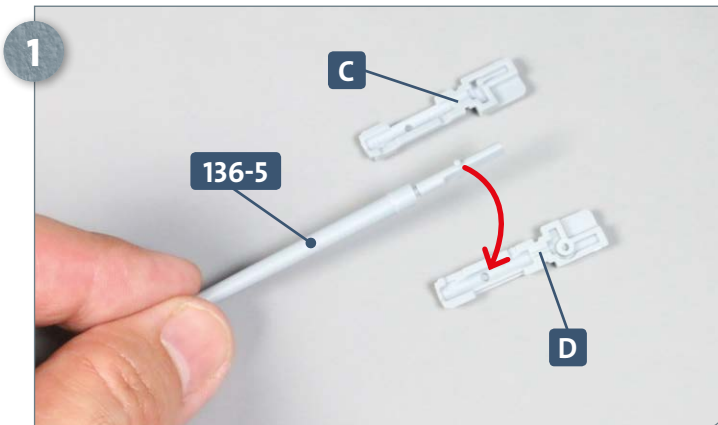
In this kit, you will assemble the 8.8cm deck gun. A tube is then attached to the deck section and a bracket mounted at the front of the conning tower.



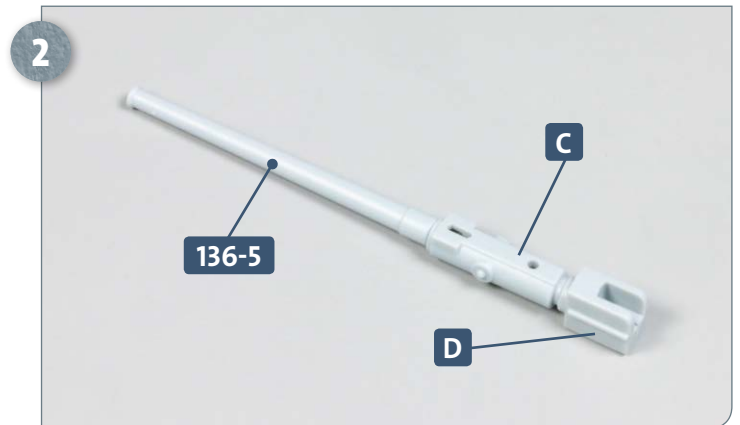
Parts reference list

Part no.	Name
136-1	Deck section
136-2	Tube
136-3, 136-4	Carriage (in two halves)
136-5	Gun barrel
136-6	Recoil brake
136-7	Adjustment wheels for sight
136-8, 136-10	Protective bar
136-9	Four wheels for azimuth and elevation adjustment
136-11	Handwheel housings
136-12	Sight (A, B)
136-13	Breech (C, D)
136-14	Rotating ring and bracket (E, F, G)

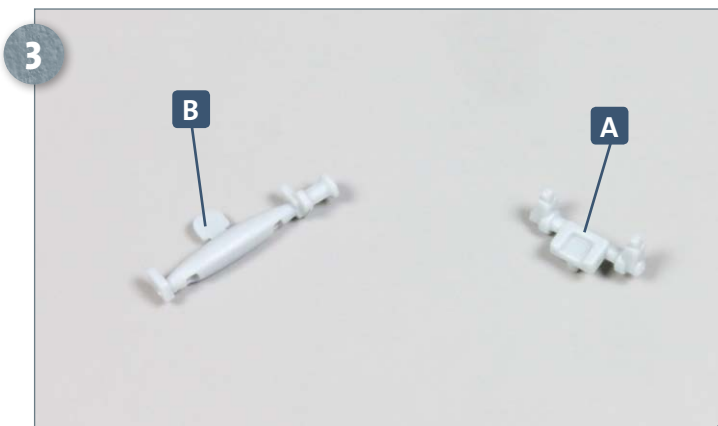
STAGE 1 → Assembly of the 8.8cm deck gun



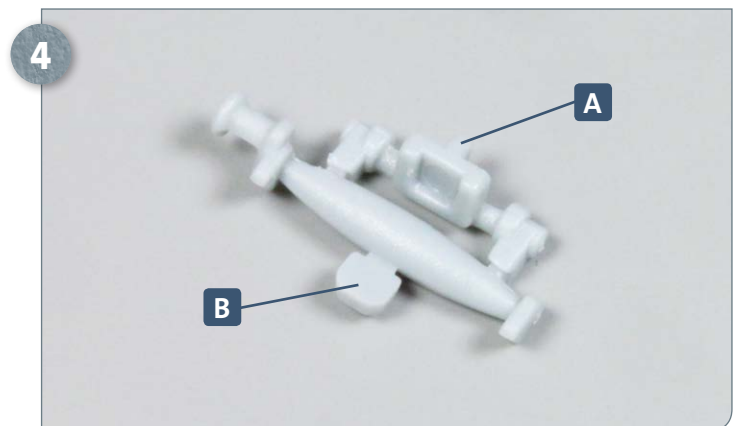
Remove the two halves of the breech, **C** and **D**, from frame **136-13** and set them aside. Take the barrel **136-5**, apply some glue to the peg, and insert it into the recess of part **D**, as indicated.



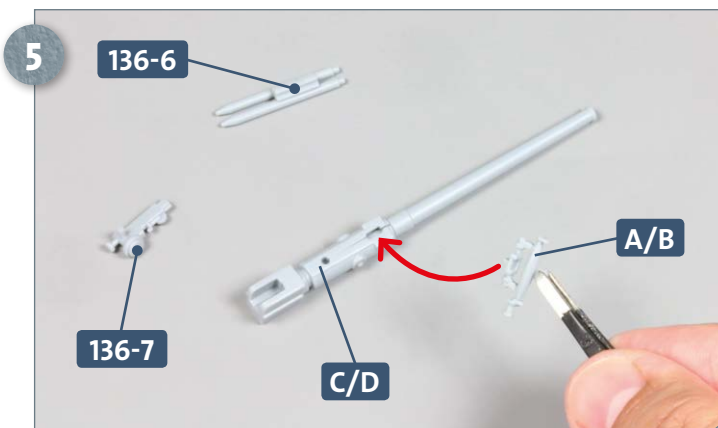
The barrel **136-5** is now attached to half of the breech, **D**. Apply a thin layer of glue to the contact surfaces of the two breech halves **C** and **D** and join them together.



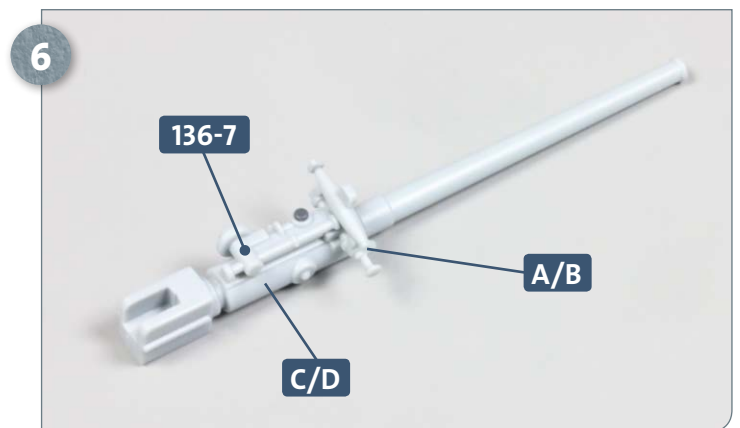
Separate the two parts of the sight **A** and **B** from frame **136-12**.



Apply a little glue to the two pegs of part **A** and insert them into the recesses of part **B**. Pay close attention to the correct alignment of the two parts.

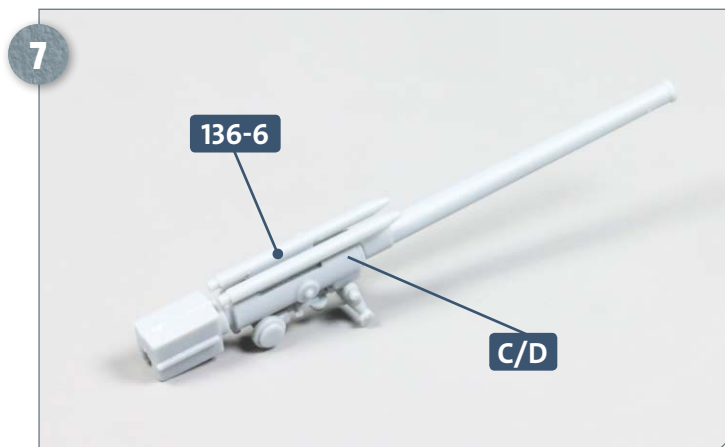


Apply a little glue to the peg of the sight **A/B** and insert it into the slot at the top of the breech **C/D**, as indicated by the arrow. Also, have ready parts **136-6** and **136-7**.

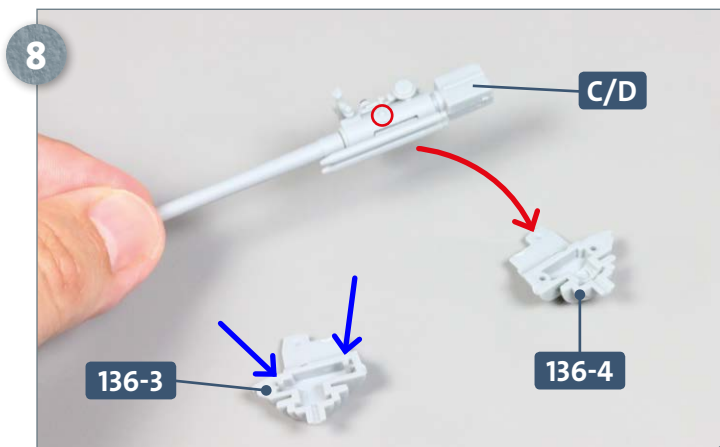


Glue the adjustment wheels **136-7** to the breech **C/D** directly behind the sight **A/B** with some glue, inserting the peg into the hole, as shown above.

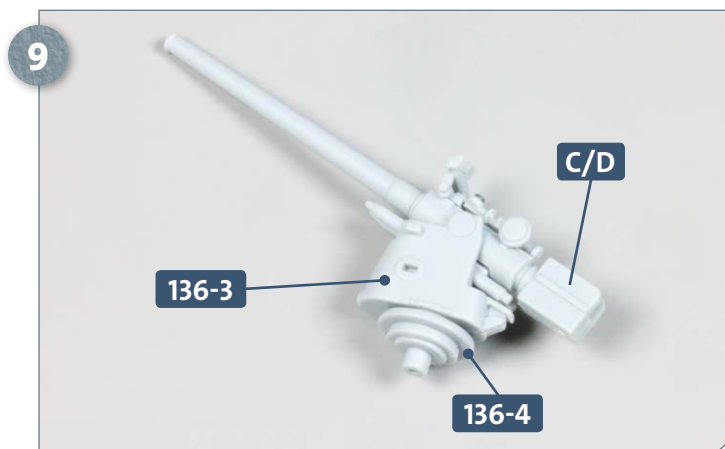
Kit 136: The 'Eight-Eight'



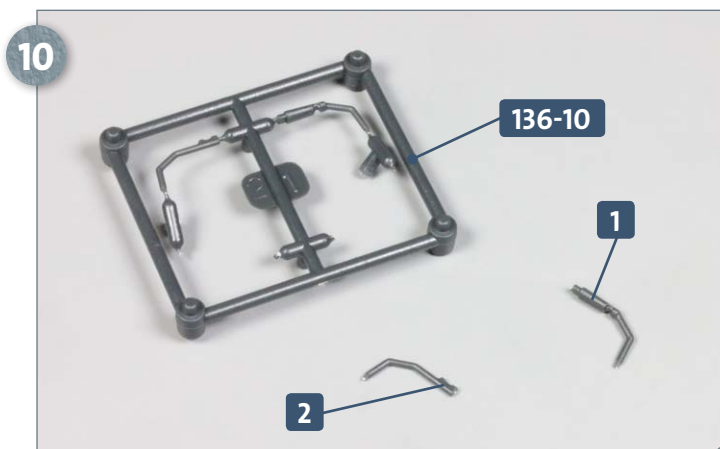
Turn the gun assembly upside down. The recoil brake **136-6** is glued to the underside of the breech **C/D**.



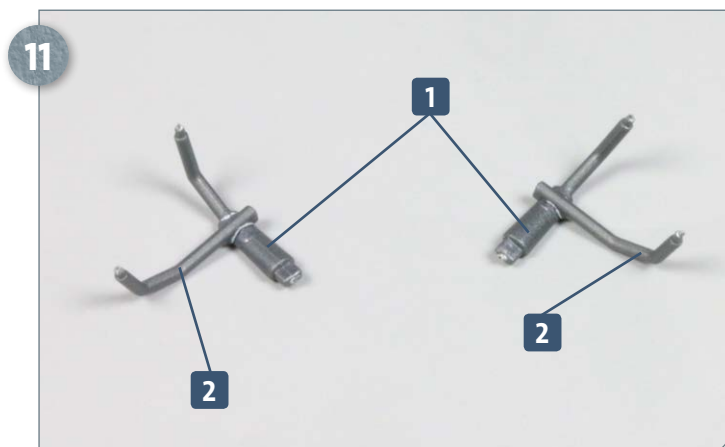
Have ready the two halves of the carriage **136-3** and **136-4**. Insert the peg of the breech block **C/D** (circled) into the recess of **136-4**, indicated by the red arrow: do not glue it, as the barrel should remain height adjustable. Apply glue to the two pegs of **136-3** (see blue arrows).



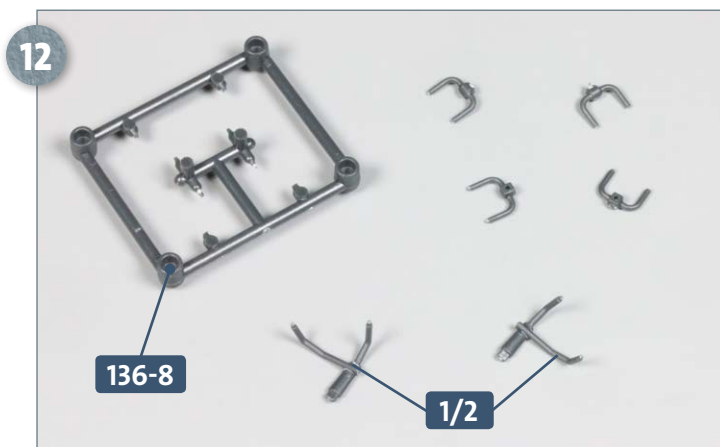
Connect the two halves of the carriage **136-3** and **136-4**. The barrel and breech **C/D** is now mounted in the carriage and is height adjustable.



Detach one each of parts **1** and **2** from frame **136-10**, as pictured.

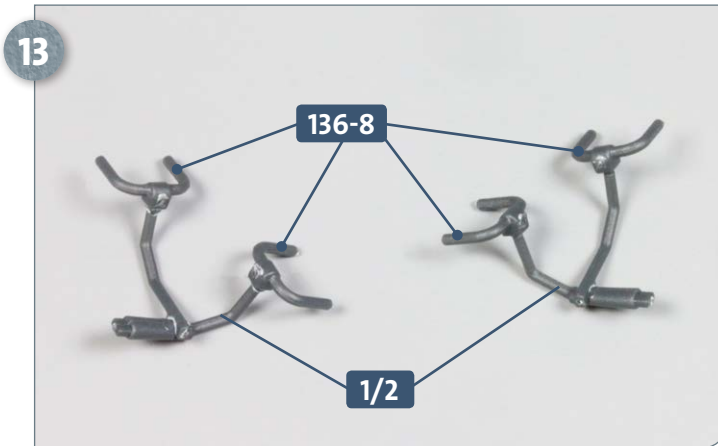


Apply some glue to the underside of the curve of part **2** and glue it to the narrow part of part **1**. Use the second parts **1** and **2** to make a second, mirror-image assembly, as pictured.

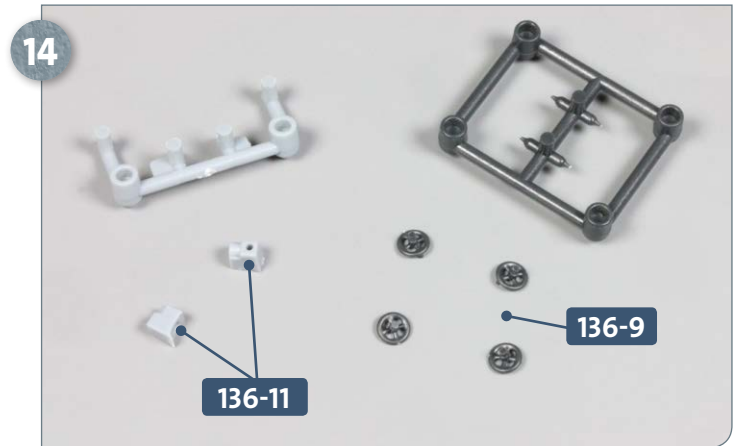


Separate the four identical parts from frame **136-8**. They will be joined together with the two **1/2** assemblies in the next step to create two protective bars.

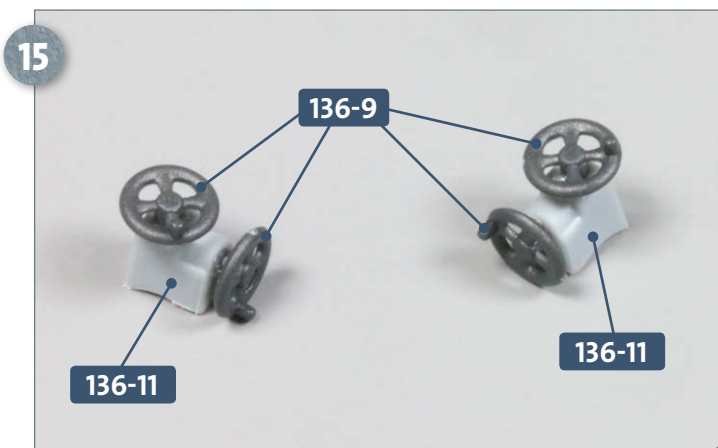
Kit 136: The 'Eight-Eight'



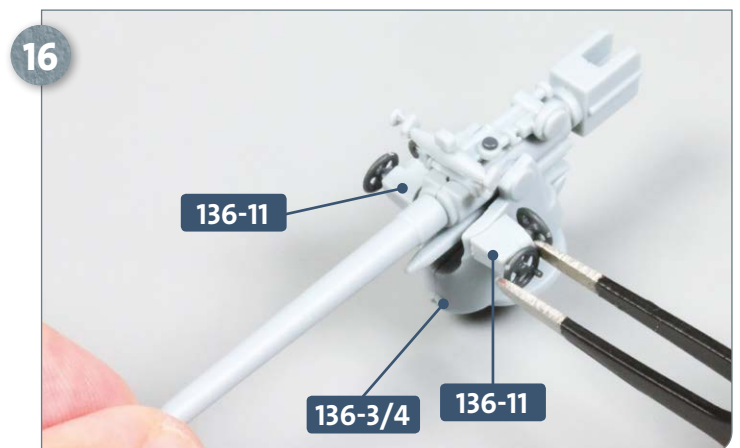
Glue one of the parts from frame **136-8** to each of the two free narrow ends of the parts **1/2** assemblies, as shown in the photo.



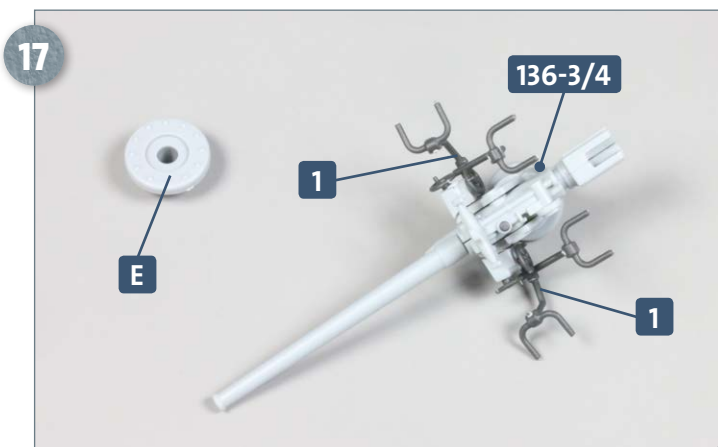
Next, separate the two housings **136-11** and four handwheels **136-9** from their frames.



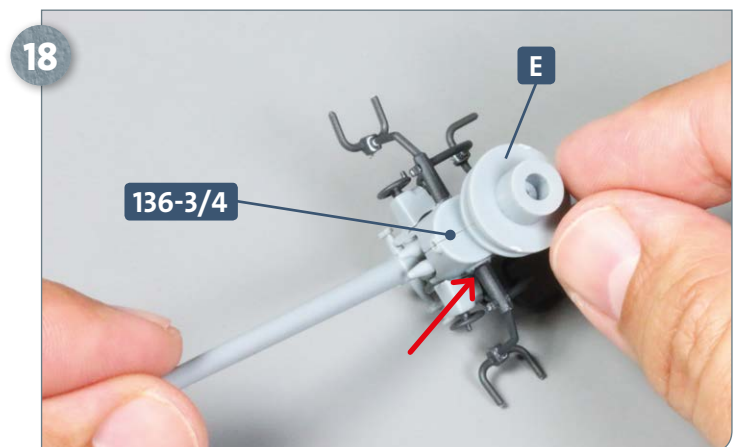
Glue two handwheels **136-9** to each of the housings **136-11**. To do this, insert the central pegs of the handwheels into the corresponding holes in the housings.



Glue one housing **136-11** onto each side of the carriage **136-3/4**, as shown in the photo.



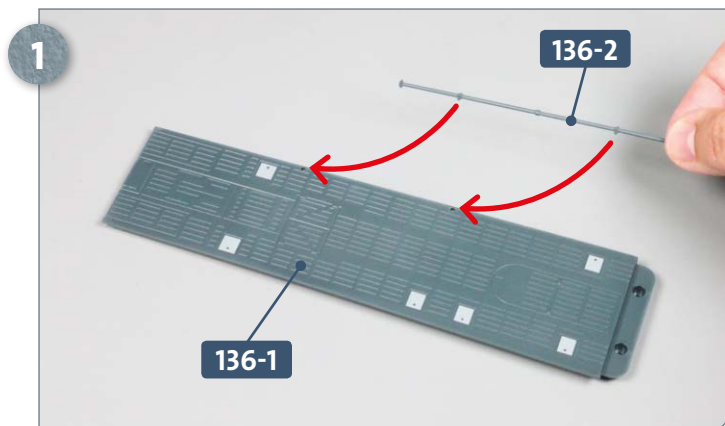
Next, glue a protective bracket a little further down on either side of the carriage **136-3/4**: insert the peg of **1** into the recess of the carriage (see also the arrow in the next photo). Separate the rotating ring **E** from frame **136-14**.



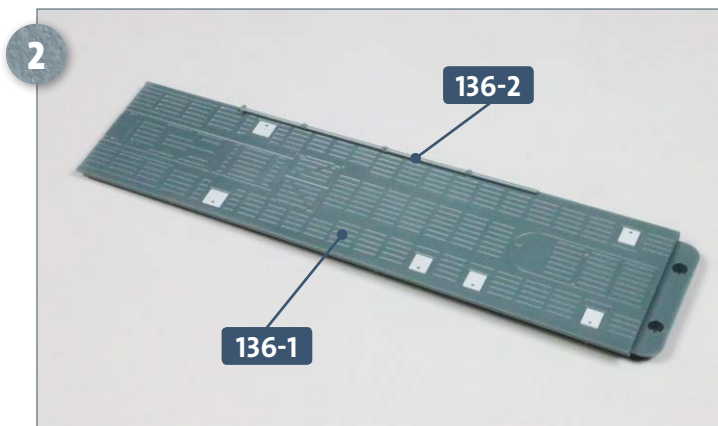
Glue the rotating ring **E** to the underside of the carriage **136-3/4**, as pictured above.

Kit 136: The 'Eight-Eight'

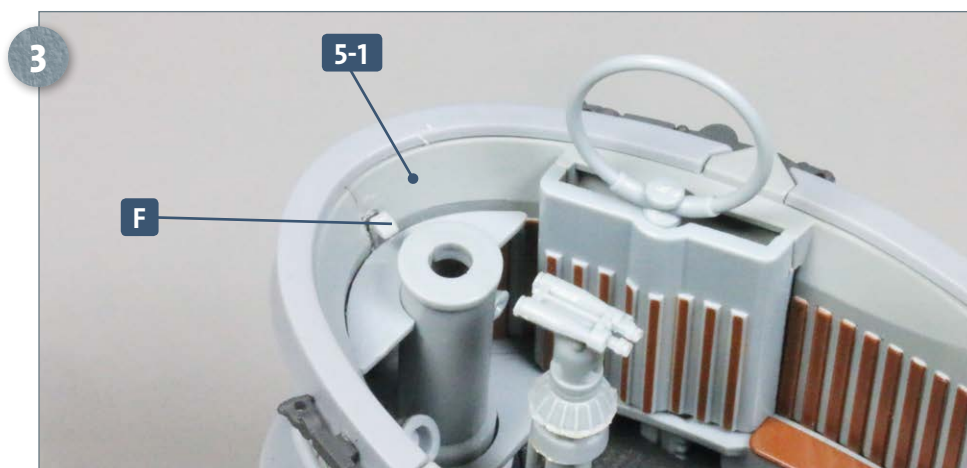
STAGE 2 → Mounting the tube and bracket



Separate the tube **136-2** from the frame. Add a little glue to the two pegs and insert them into the holes in the deck section **136-1**, as shown above.

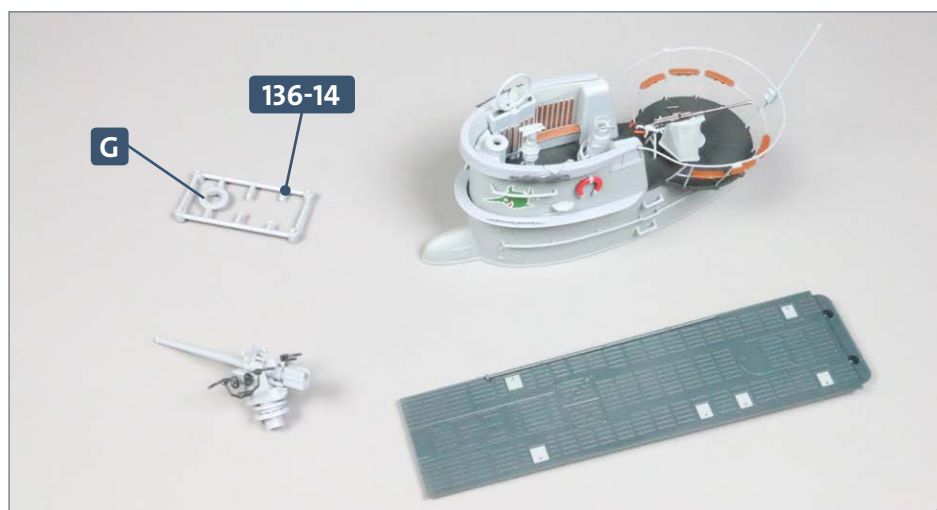


The photo shows the tube **136-2** is glued to the starboard (R) side of deck section **136-1**.



Place the conning tower on your work surface. Detach the bracket, **F**, from frame **136-14**. Glue the bracket into the recess located at the front of the starboard (R) side bulwark **5-1**.

COMPLETED WORK



The 8.8cm gun has now been assembled, a tube has been attached to the deck section and a bracket is attached to the conning tower. Store the frame with the lower part of the rotating ring, **G**, in a safe place.