

U 96

U-BOAT

Pack 33

Assembly Instructions

Kit 129: Model stand (X)

Kit 130: The upper deck (I)

Kit 131: The upper deck (II)

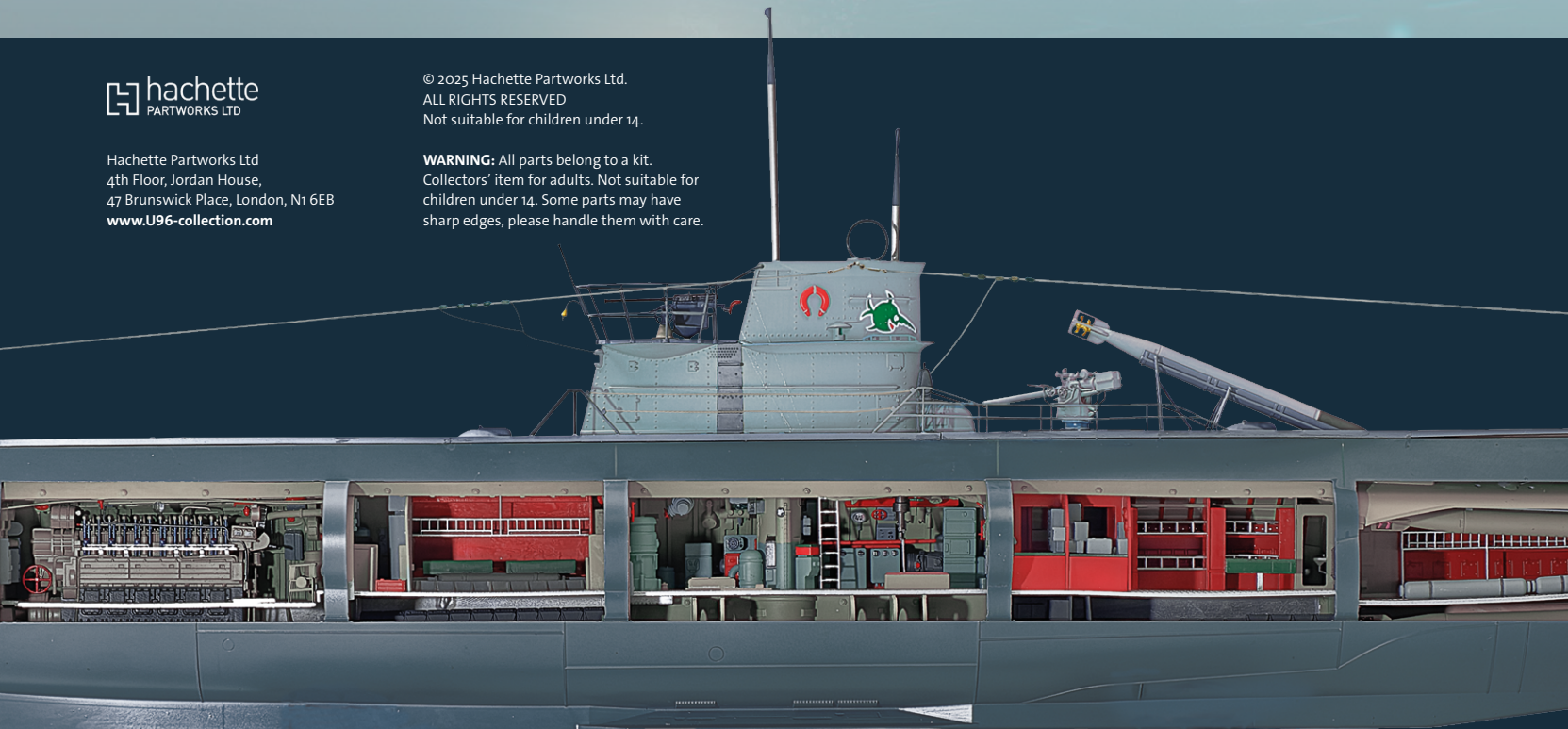
Kit 132: The forward dive planes



Hachette Partworks Ltd
4th Floor, Jordan House,
47 Brunswick Place, London, N1 6EB
www.U96-collection.com

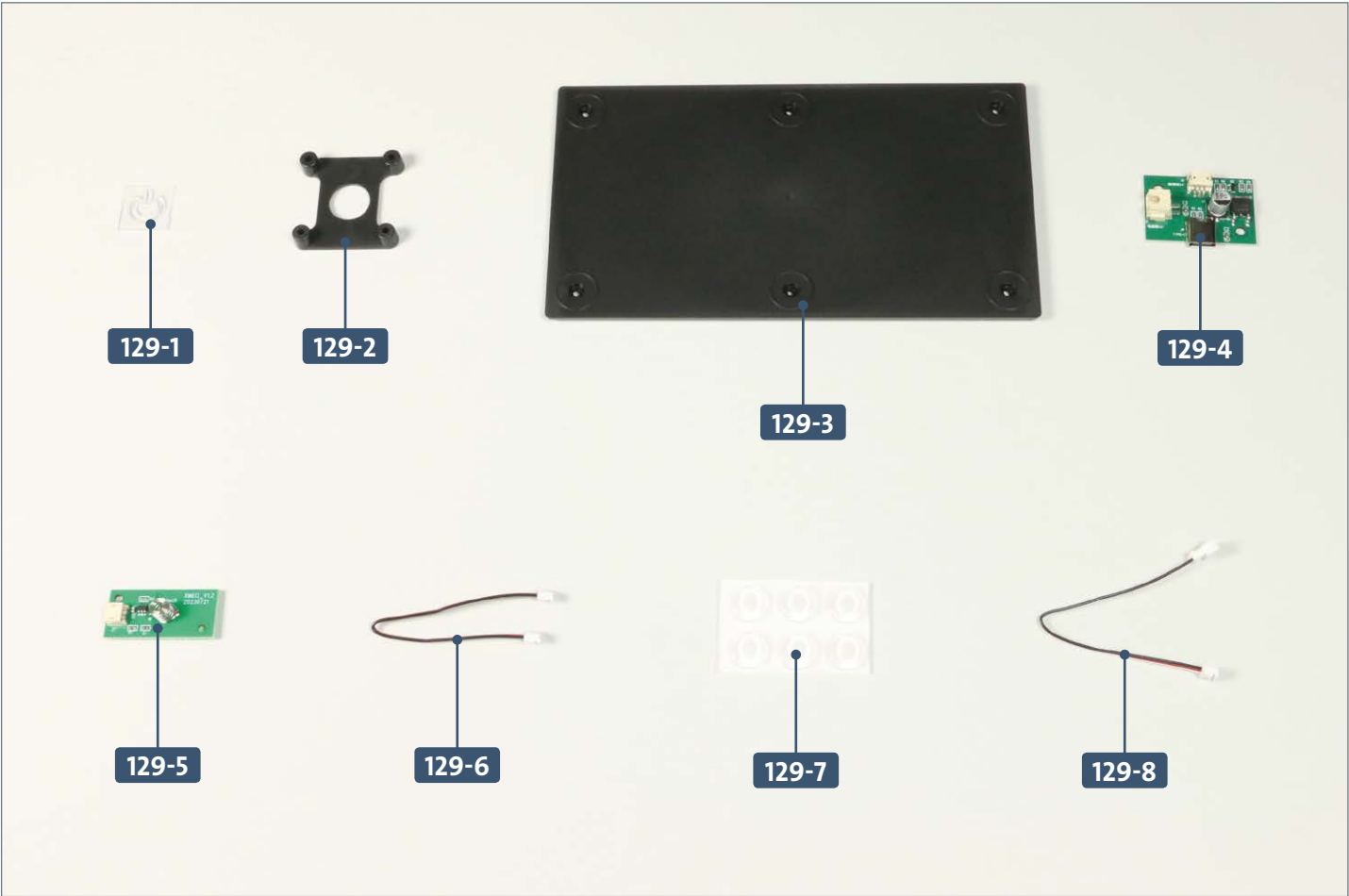
© 2025 Hachette Partworks Ltd.
ALL RIGHTS RESERVED
Not suitable for children under 14.

WARNING: All parts belong to a kit.
Collectors' item for adults. Not suitable for
children under 14. Some parts may have
sharp edges, please handle them with care.

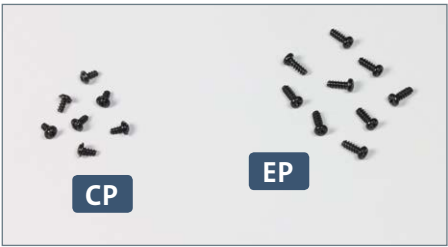


Kit 129: Model stand (X)

In this kit, two circuit boards are mounted in the forward part of the stand: one with a USB-C port and one with a contact switch. The base of the stand is added, complete with PVC feet.



Parts reference list	
Part no.	Name
129-1	Power button
129-2	Mounting bracket
129-3	Base of forward stand section
129-4	Circuit board (with USB-C port)
129-5	Circuit board (with contact switch)
129-6	Cable
129-7	Six PVC feet
129-8	Extension cable (See note in step 1)

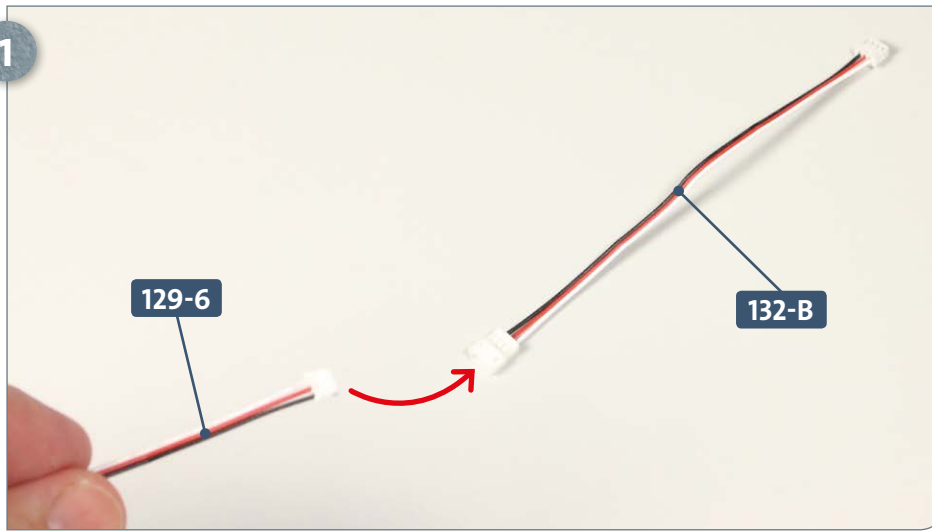


Screws		
Ref	No.	Dimensions
CP	6 + 1	2 x 4 mm
EP	8 + 1	2.3 x 6 mm

Kit 129: Model stand (X)

STAGE 1 → Working on the forward stand section

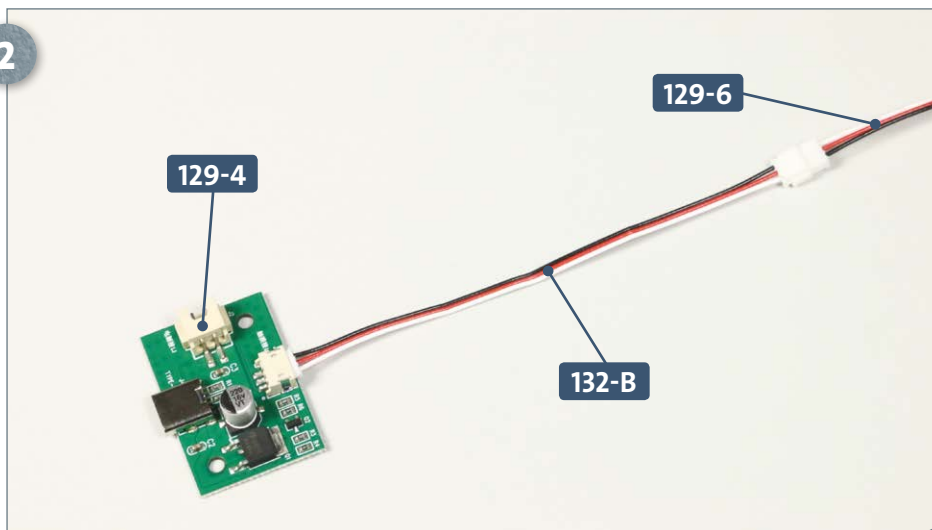
1



NOTE: Please discard cable **129-8** that was supplied with this kit. Instead, use the replacement cable **132-B** supplied with kit 132, as this is the correct part.

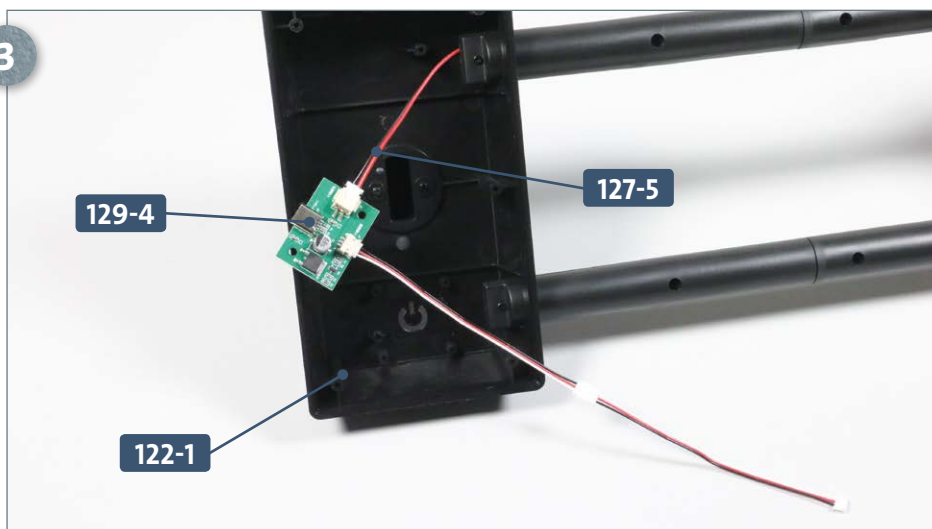
Take cable **129-6** and extension cable **132-B** and connect them together, as indicated by the arrow.

2



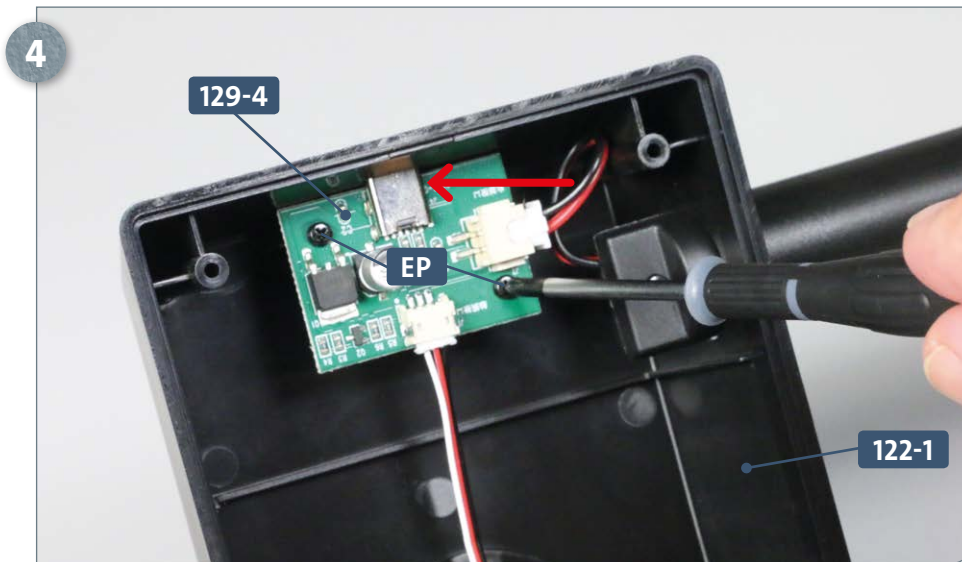
This photo shows that cables **129-6** and **132-B** are now connected. Now connect the plug of the extension cable **132-B** to the three-pin socket of circuit board **129-4**.

3

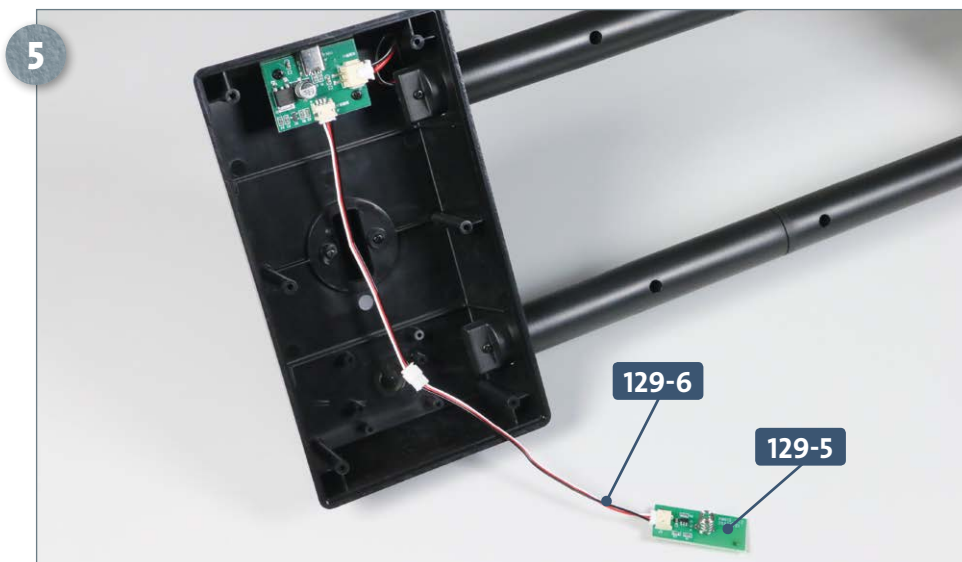


Place the stand on your work surface so that you can access the underside of the forward stand section **122-1**. Insert the connector from cable **127-5** into the two-pin socket of circuit board **129-4**, as shown, left.

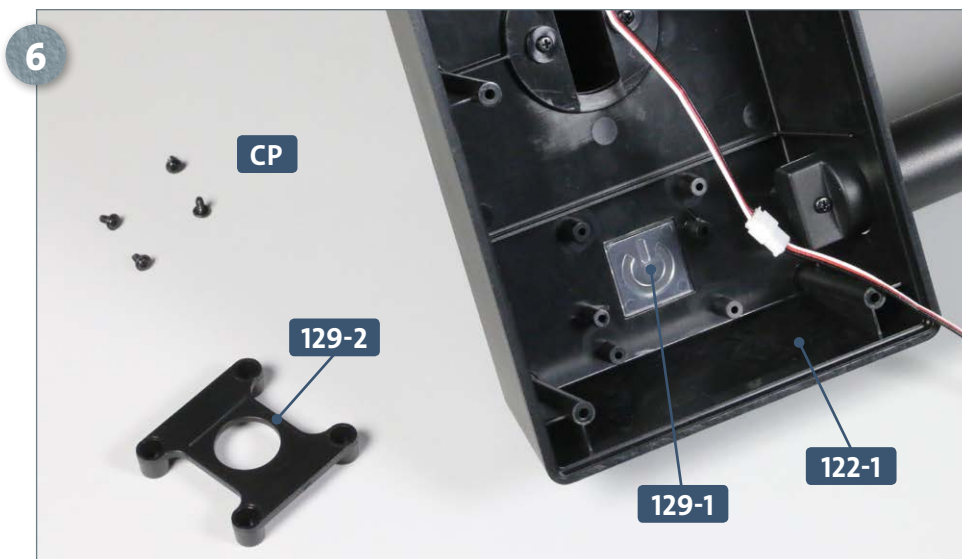
Kit 129: Model stand (X)



Place the circuit board **129-4** over the screw holes on the underside of the forward stand section **122-1** and secure it in place with two **EP** screws. Make sure the board's USB-C socket is positioned in the recess in the body of the stand. The arrows in both images show the USB-C port.

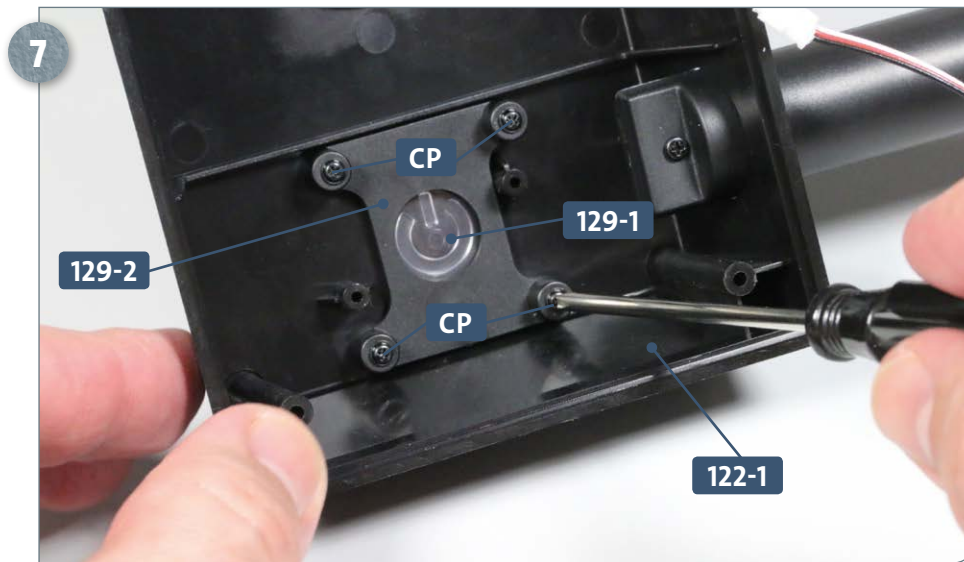


Plug the connector of cable **129-6** into the socket on the circuit board **129-5**.

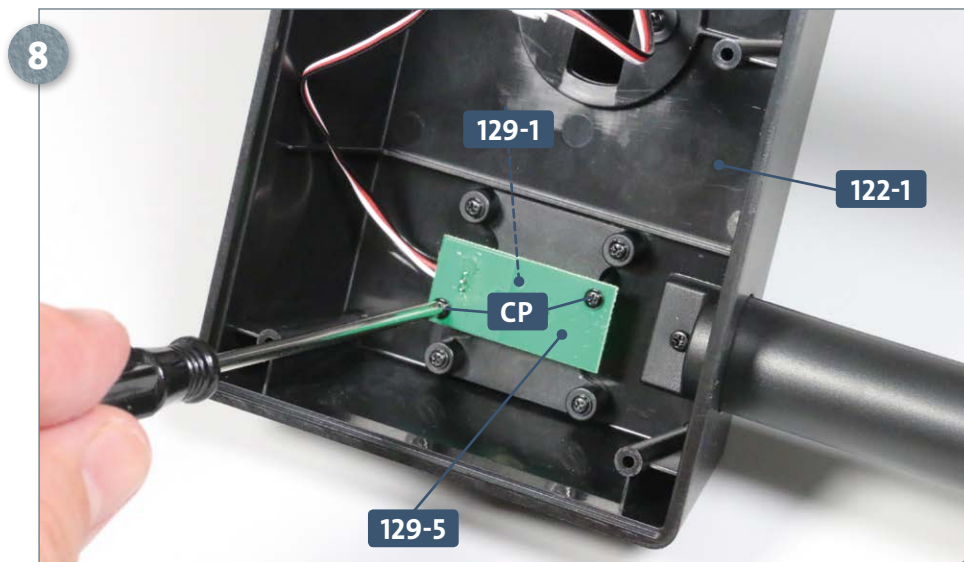


Insert the power button **129-1** into the slot on the underside of the forward stand section **122-1**. Have ready the mounting bracket **129-2** and four **CP** screws.

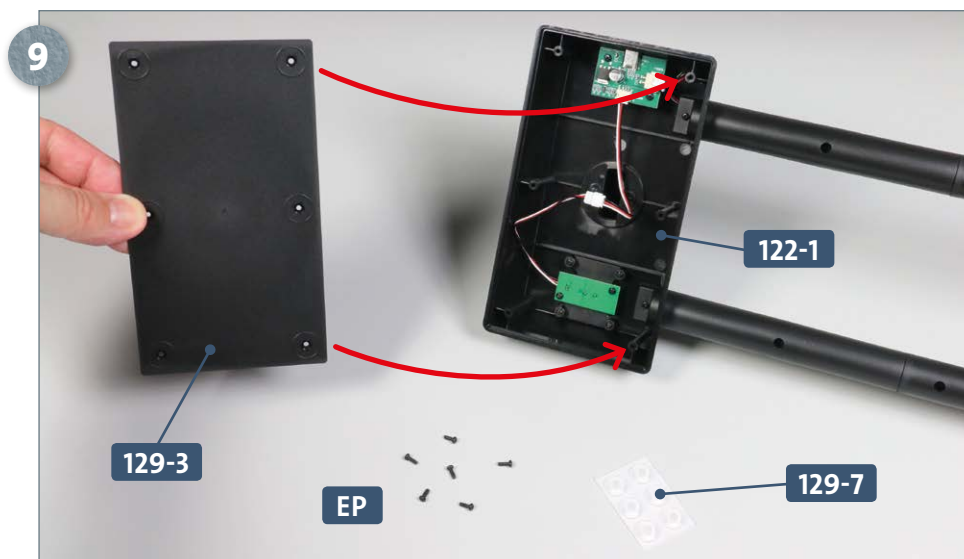
Kit 129: Model stand (X)



Fit the mounting bracket **129-2** into the body of the stand **122-1**, so that it holds the power button **129-1** in place. Secure the mounting bracket to the stand section with the four **CP** screws, as pictured left.



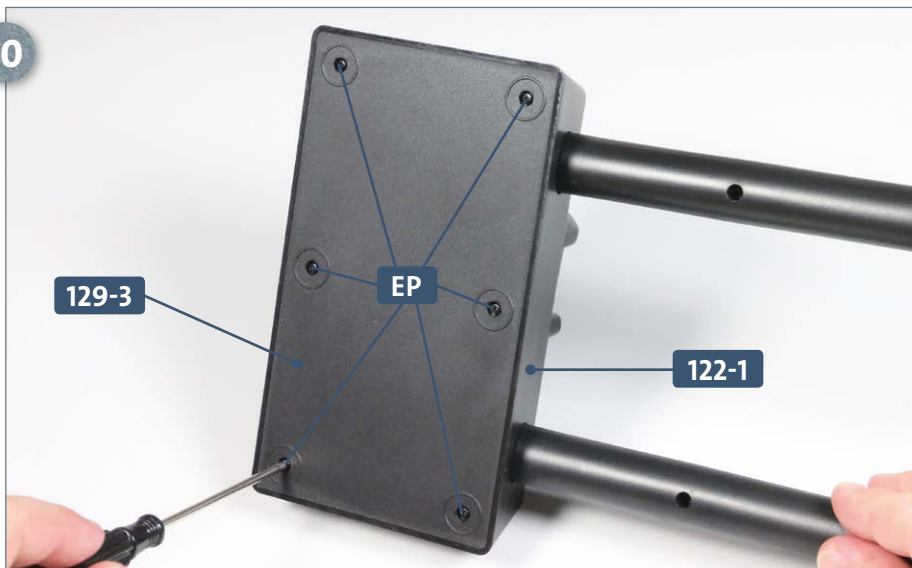
Position the circuit board **129-5** over the mounting bracket so that the contact switch (the coil spring) is against the power button **129-1** (not seen). The cable must be facing in the direction shown in the image. Secure the circuit board to the mounts of the stand section **122-1** with two **CP** screws.



Have ready the PVC feet **129-7** and six **EP** screws. Take the base **129-3** and fit it onto the front stand section **122-1** from below, as pictured.

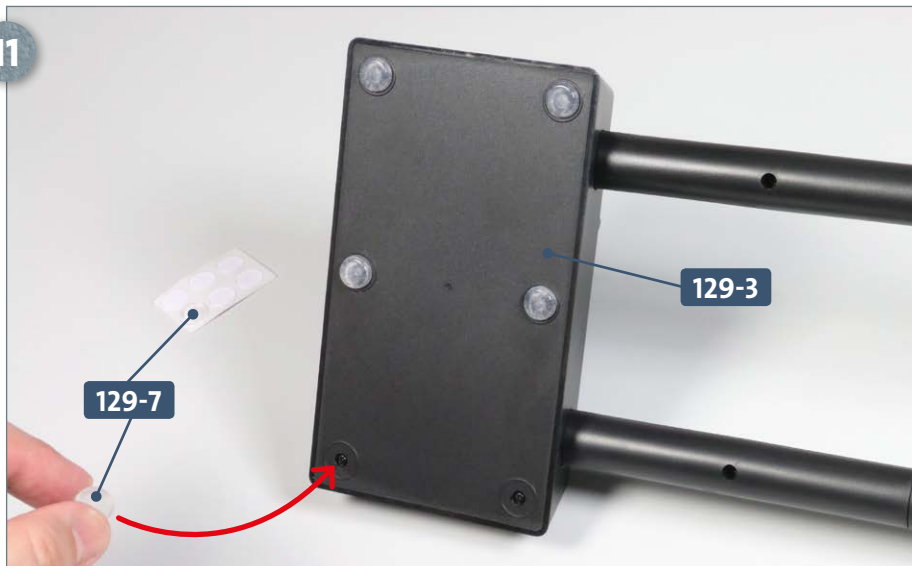
Kit 129: Model stand (X)

10



Attach the base **129-3** to the forward stand section **122-1** with the six **EP** screws, as shown, left.

11



Place one of the six PVC feet **129-7** over each of the screws on the stand base **129-3**.

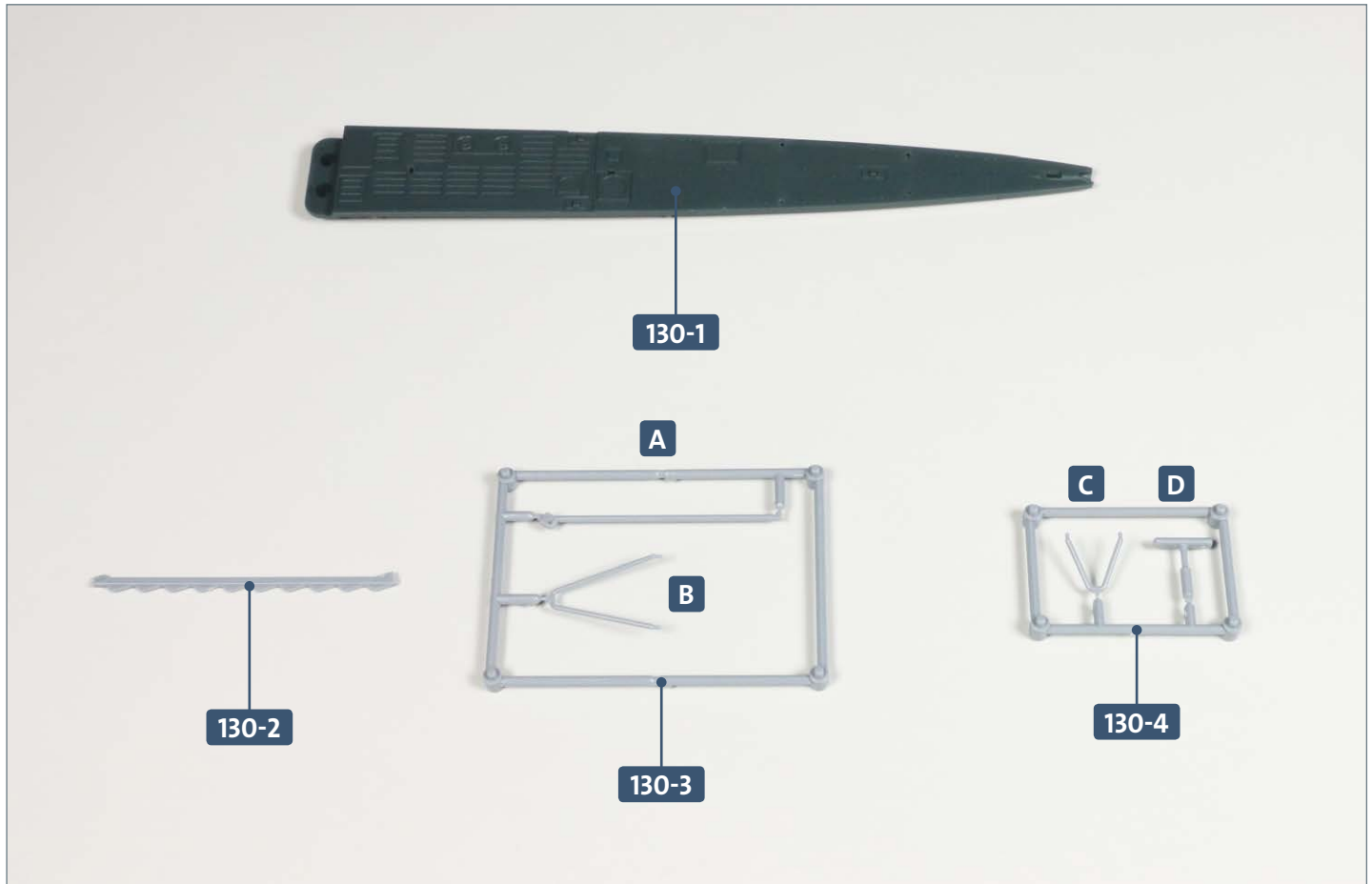
COMPLETED WORK



Cables have now been connected to two circuit boards before their fitting in the forward stand section, and the power button has been mounted. The base of the stand has also been attached and fitted with PVC feet.

Kit 130: The upper deck (I)

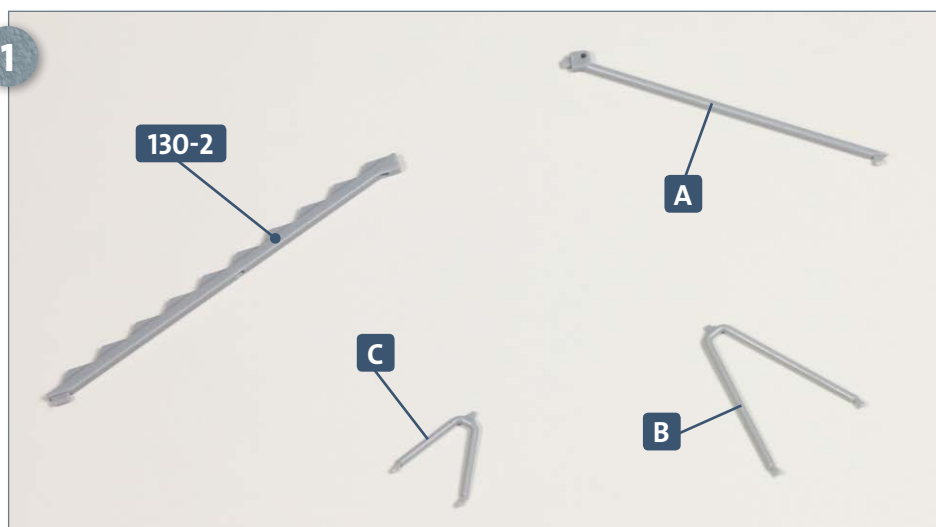
In this kit, the net cutter is assembled and then attached to the top of the upper deck. The crystal rotating-base apparatus is also fitted to the bow section of the upper deck.



Parts reference list	
Part no.	Name
130-1	Upper deck bow section
130-2	Net cutter
130-3	Aft and middle net cutter stands
130-4	Forward net cutter stand and crystal rotating-base apparatus

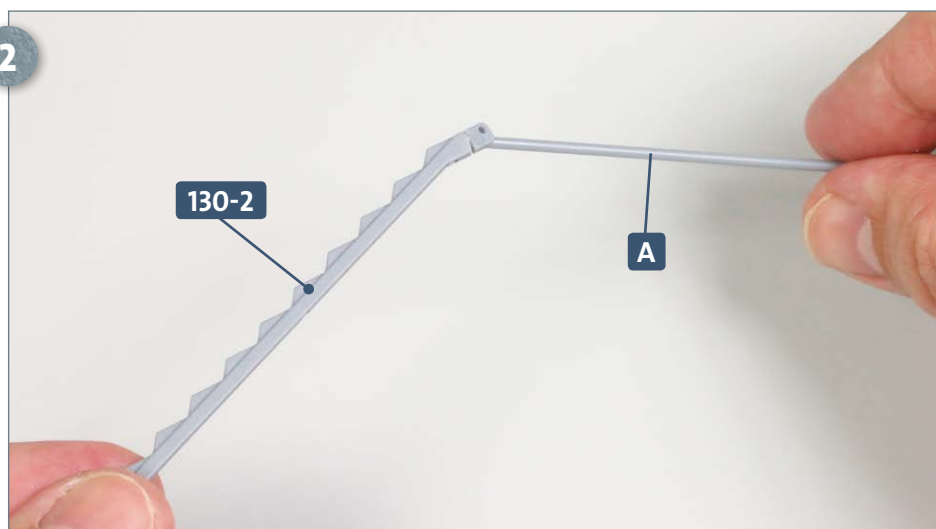
STAGE 1 → Fitting the net cutter and crystal rotating-base apparatus

1



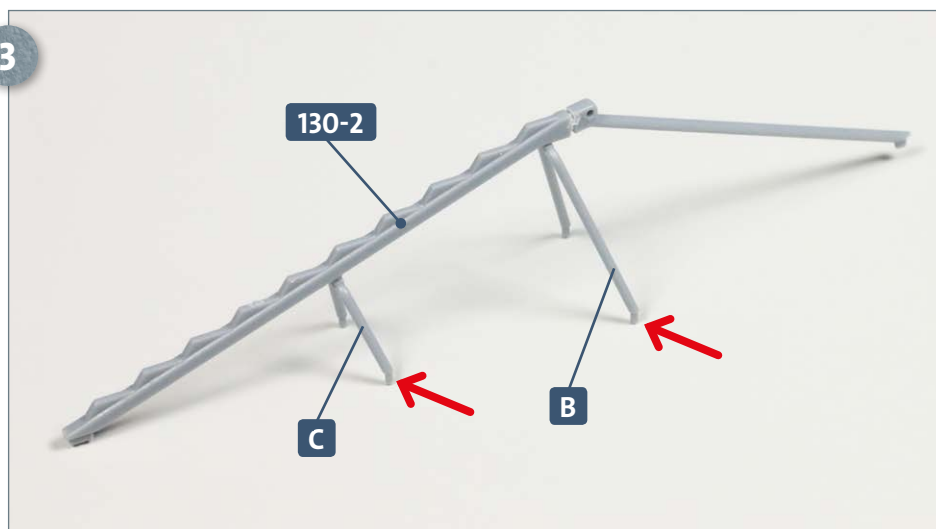
Place the net cutter **130-2** on your work surface. Detach the three upright parts, **A**, **B** and **C** from frames **130-3** and **130-4**. Next, smooth away any connecting attachment points with a file or fine sandpaper.

2



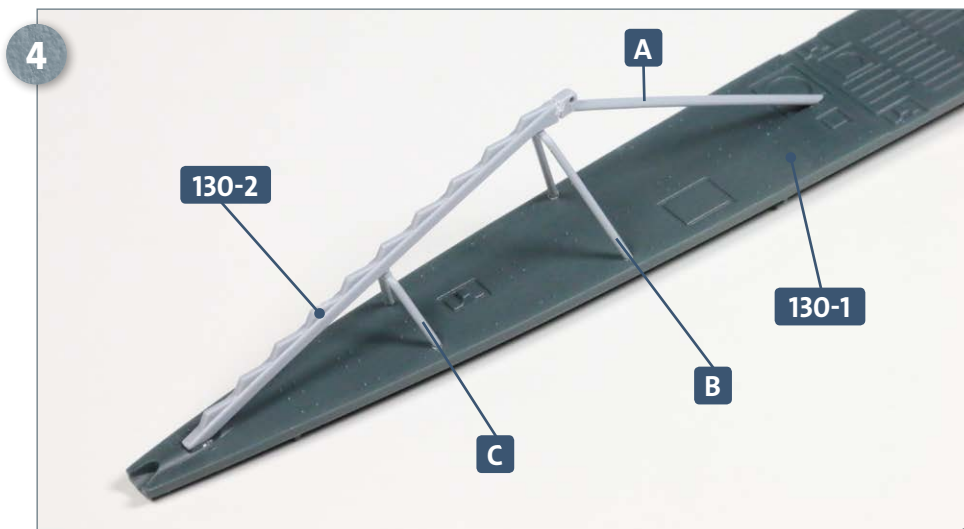
After test-fitting, apply a little glue to the tab at the wider end of the aft stand, **A**, and insert it into the recess of the net cutter **130-2**, as pictured.

3

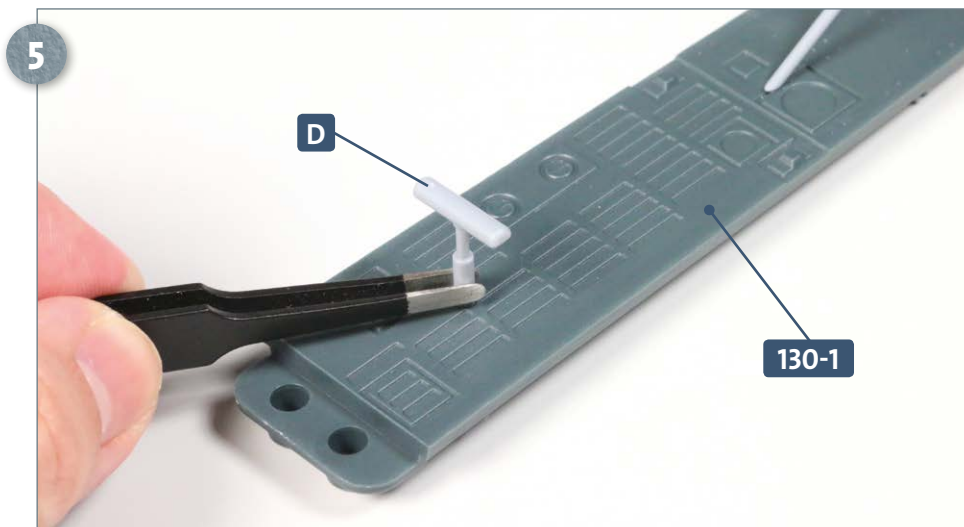


Glue the tabs of the middle and forward stands **B** and **C** into the small holes on the underside of the net cutter **130-2**. Make sure to align the two stands so that their feet are angled as shown, i.e. to the left as shown in the photograph. The two arrows point to the feet.

Kit 130: The upper deck (I)



After test-fitting and making any necessary adjustments, apply a little glue to the feet of stands **A**, **B** and **C** and to the tab at the forward end of the net cutter **130-2** and insert them into the recesses of the bow section of the upper deck **130-1**, as pictured, left.



Separate the crystal rotating-base apparatus **D** from frame **130-4**. Apply a little glue to the peg and insert it into the slot at the aft end of the bow section **130-1**, as shown.

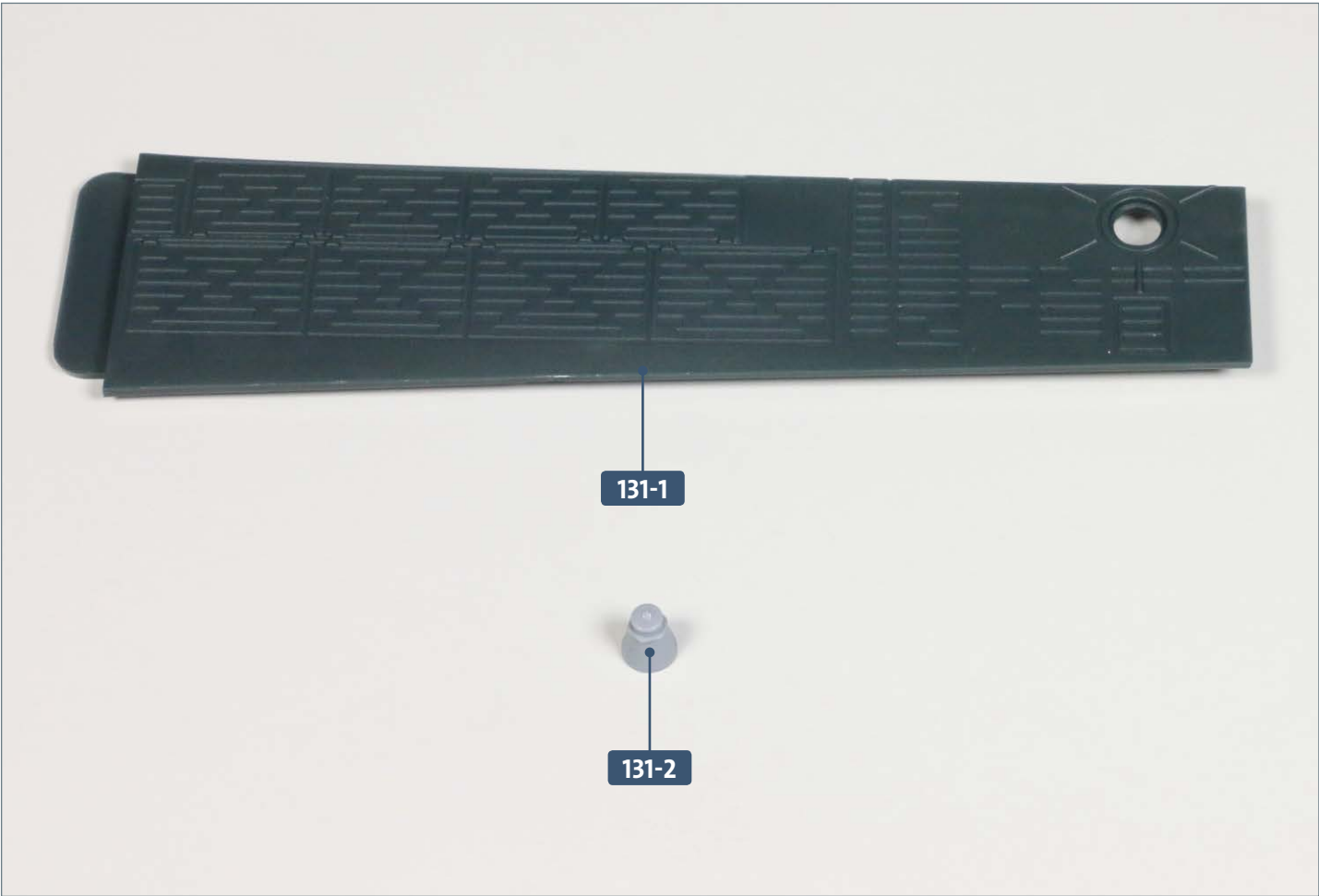
COMPLETED WORK



The net cutter and crystal rotating-base apparatus have now been attached to the upper deck.

Kit 131: The upper deck (II)

In this kit, a capstan is glued to the foredeck. The foredeck and bow section of the upper deck are then screwed together.



Parts reference list	
Part no.	Name
131-1	Foredeck
131-2	Capstan

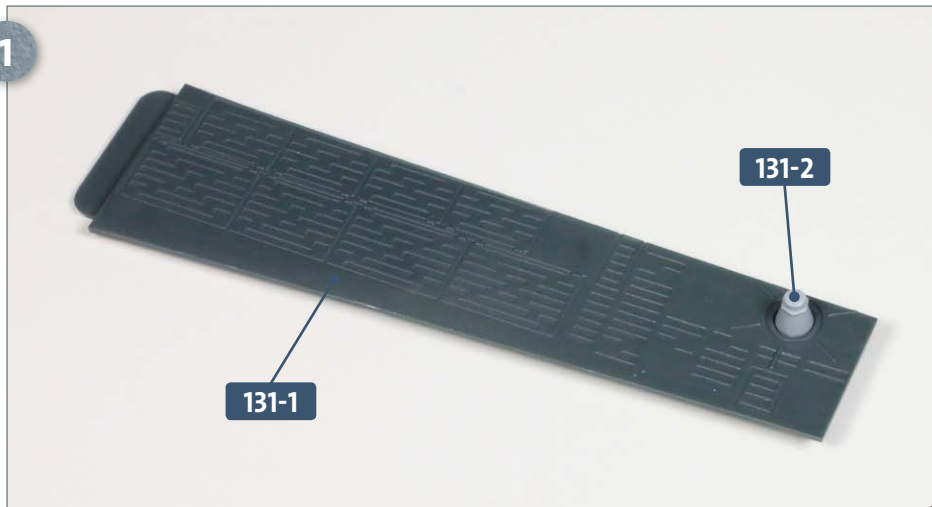


Screws		
Ref	No.	Dimensions
CP	2 + 1	2 x 4 mm

Kit 131: Upper deck (II)

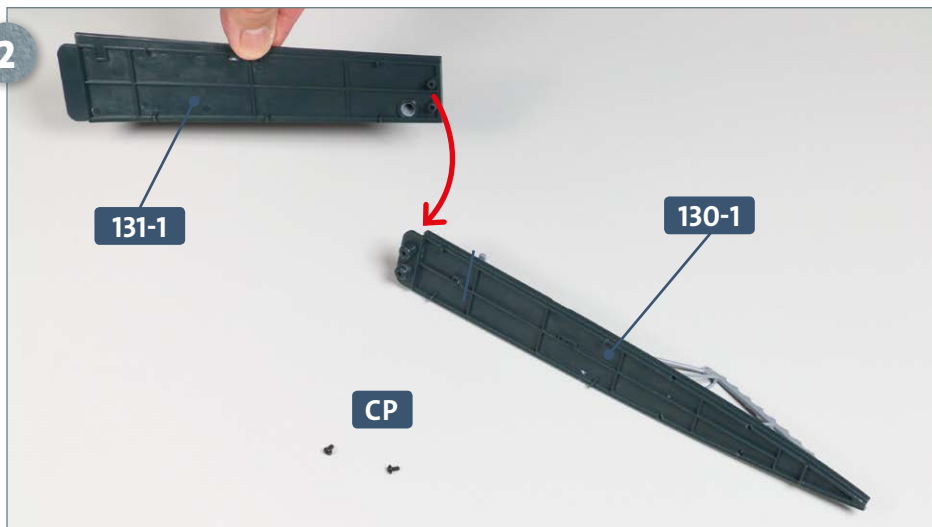
STAGE 1 → Installing the capstan and joining the upper deck sections

1

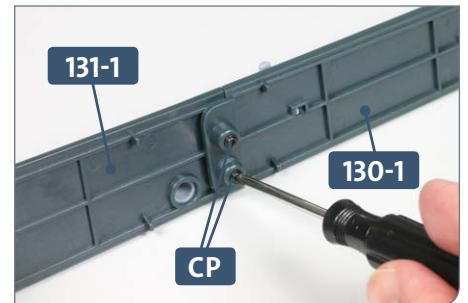


Place the foredeck **131-1** on your work surface. Apply some glue to the lower edge of the capstand **131-2** and insert it into the large hole in the deck.

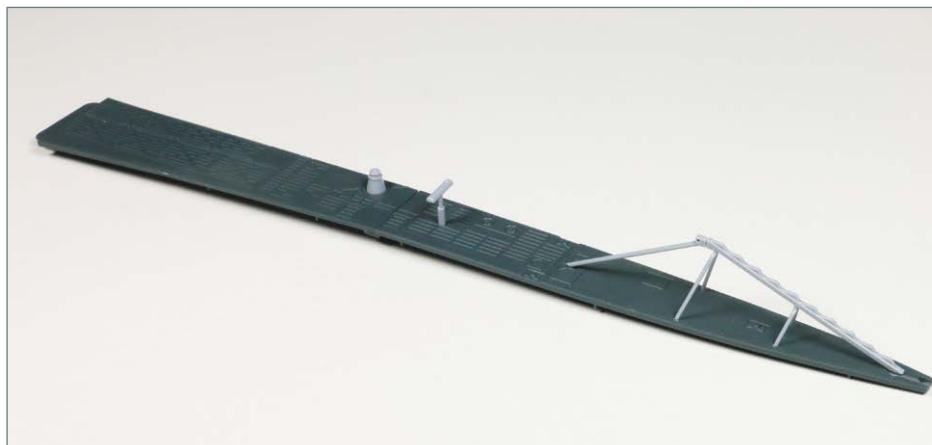
2



Have ready the bow section **130-1** (from the previous kit) and two **CP** screws. Join the foredeck **131-1** to the bow section as indicated by the arrow and secure the deck sections together with the two **CP** screws (see inset detail below).



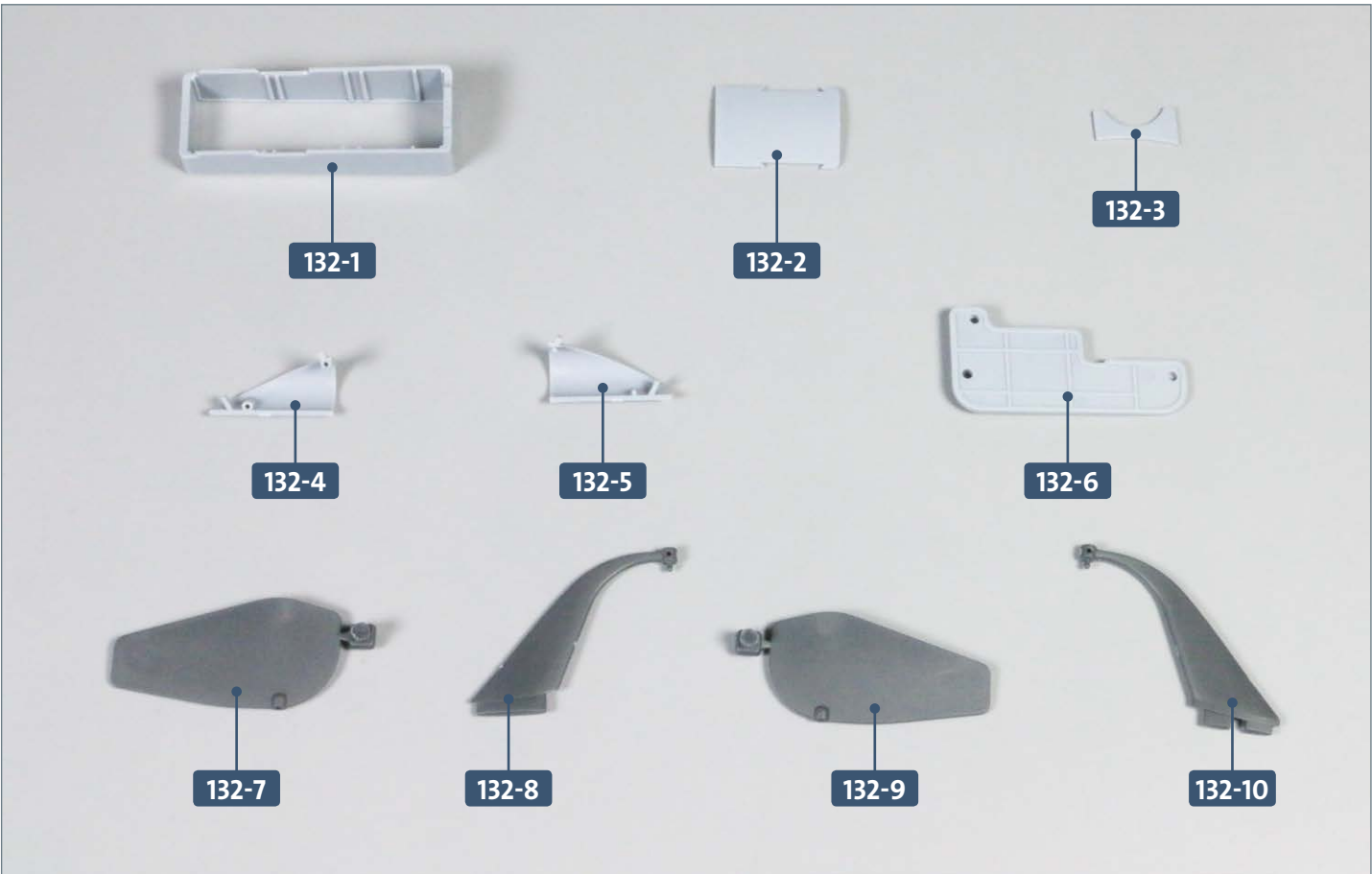
COMPLETED WORK



The capstan has now been mounted on the foredeck, and the two sections of the upper deck are joined together.

Kit 132: The forward dive planes

In this kit, the torpedo loading box, the forward torpedo loading bay and a guide rail are attached to the model. The two forward dive planes and their protective brackets are also attached.



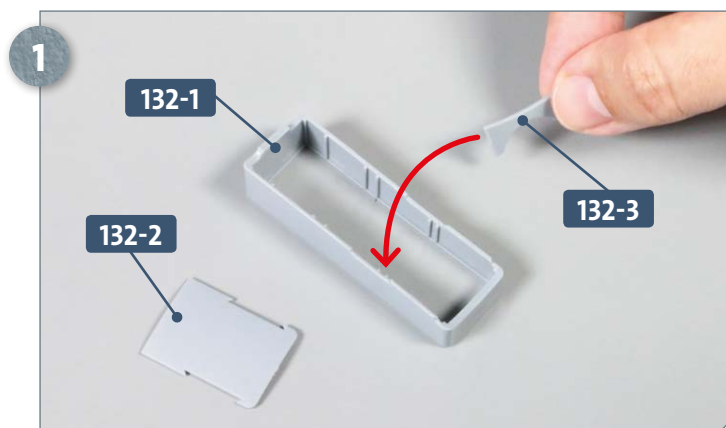
Parts reference list	
Part no.	Name
132-1	Torpedo loading box
132-2	Base of the box
132-3	Guide recess
132-4	Forward torpedo loading bay
132-5	Forward torpedo loading bay
132-6	Guide rail
132-7	Forward port (L) dive plane (2)
132-8	Port (L) protective bracket
132-9	Forward starboard (R) dive plane (1)
132-10	Starboard (R) protective bracket



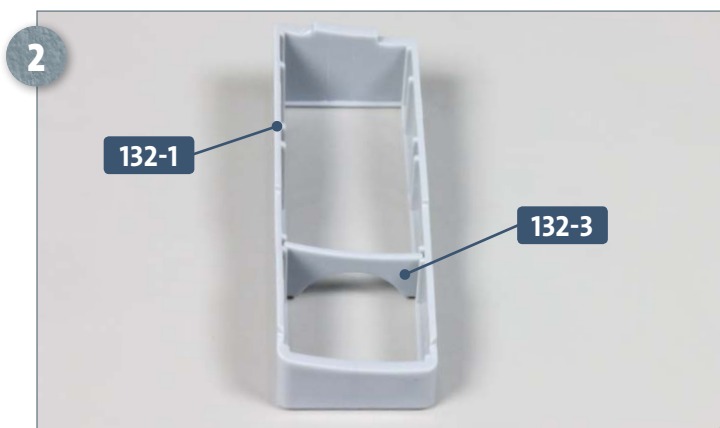
Screws		
Ref	No.	Dimensions
JP	3 + 1	2 x 8 mm

Kit 132: The forward dive planes

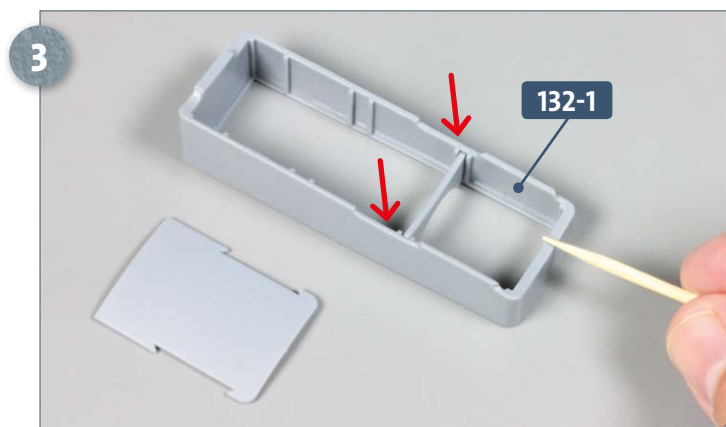
STAGE 1 → Assembly of torpedo loading shaft and guide rail



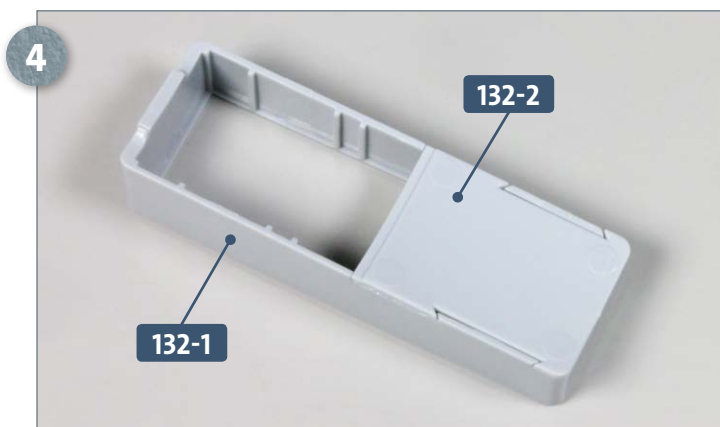
Place the torpedo loading box 132-1 and its base 132-2 on your work surface. Take the guide recess 132-3 and insert it between the notches in the box, as indicated by the arrow.



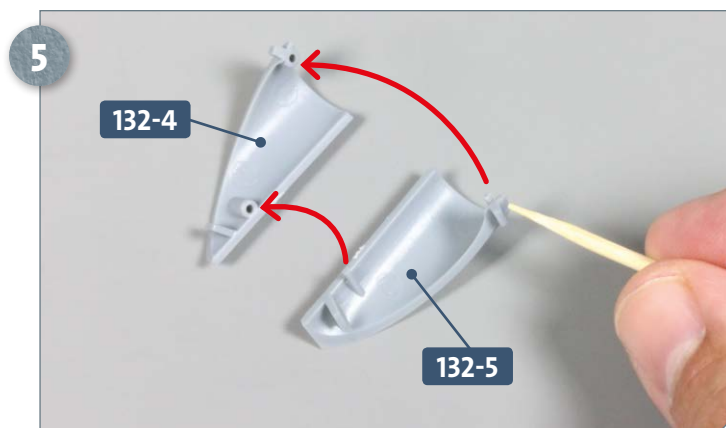
This photo shows the guide recess 132-3 correctly inserted into the torpedo loading box 132-1: pay attention to the orientation, as the part is not symmetrical.



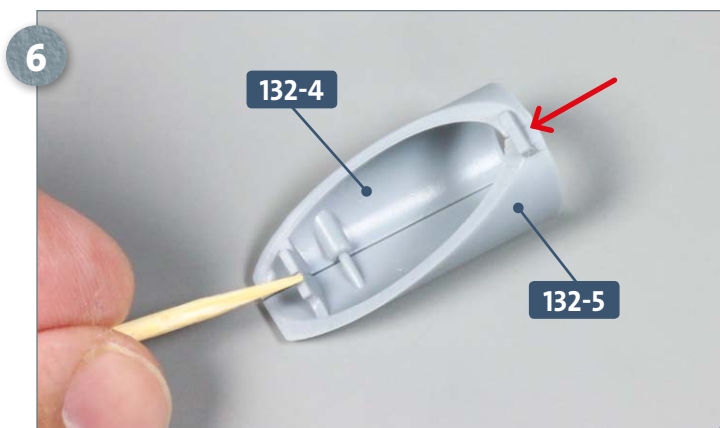
Apply glue to the rear edge of the torpedo loading box 132-1, as shown. Do the same to the two recessed areas indicated by the arrows.



Fit the base 132-2 onto the previously glued areas of the box 132-1.

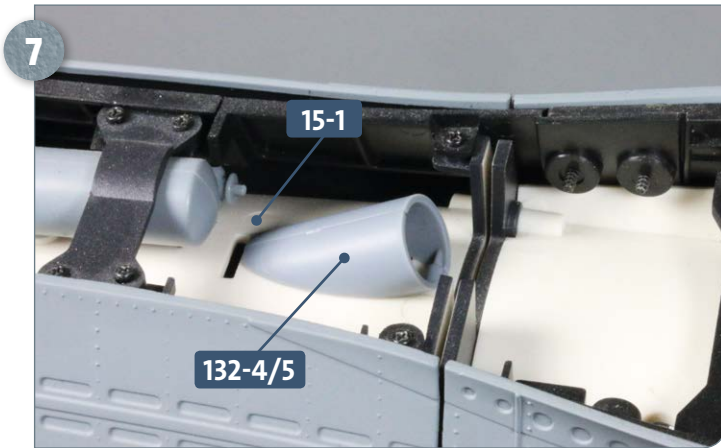


Have ready the two halves of the torpedo loading bay, 132-4 and 132-5. Apply some glue to the two pegs of 132-5, as shown.

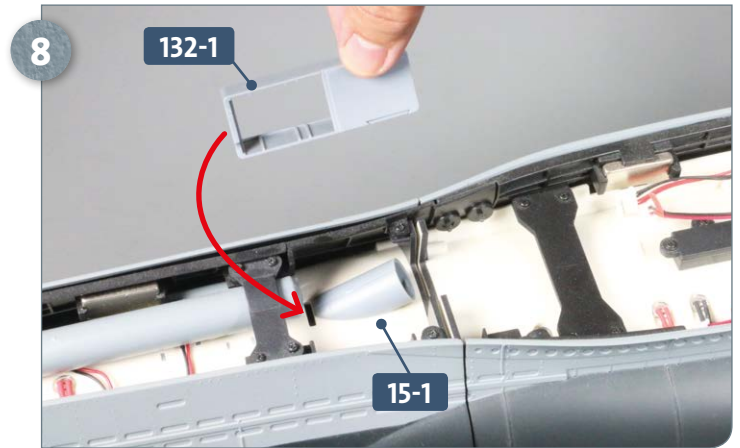


Join the two parts of the torpedo loading bay 132-4/132-5 as shown. Use a little glue to secure the two wide pegs as indicated by the arrow, above.

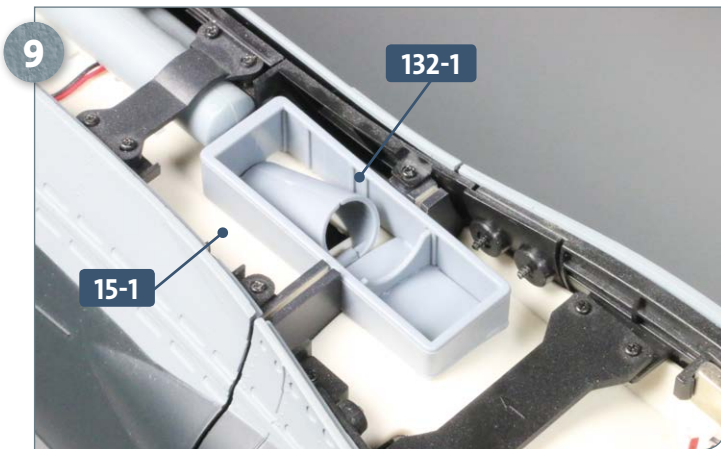
Kit 132: The forward dive planes



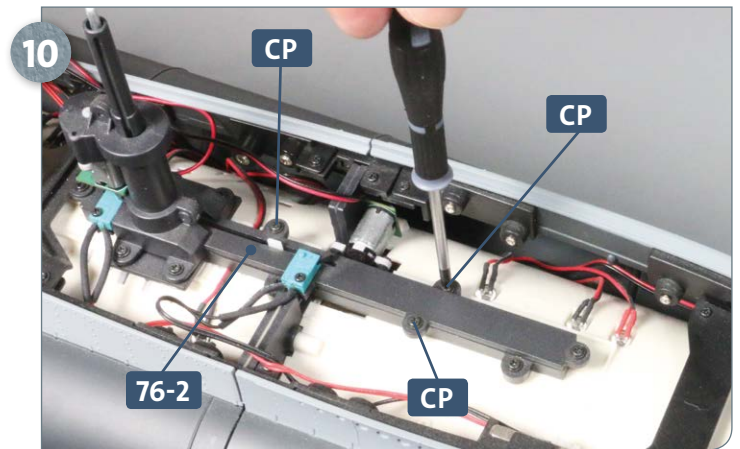
Place the model on your work surface. After applying a little glue, fit the two tabs on the forward torpedo loading bay **132-4/132-5** into the corresponding slots on the deckhead of the bow compartment **15-1**.



Apply a little glue to the wide tab on the underside of the box **132-1** and insert it into the wide slot in the deckhead of the bow compartment **15-1**, as indicated.



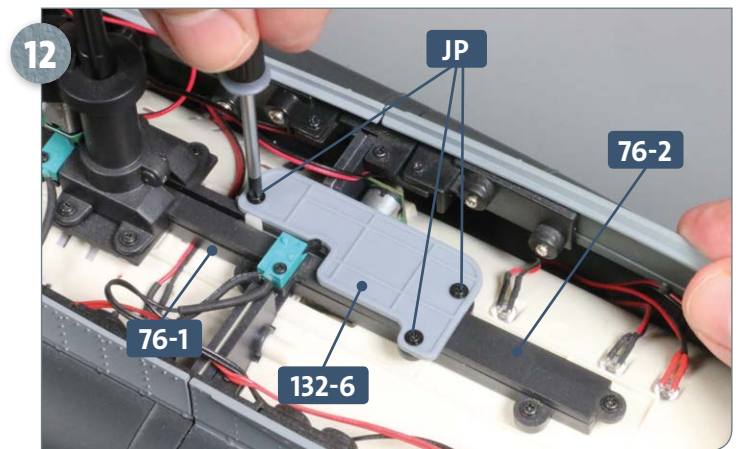
The torpedo loading box **132-1** is now mounted on the deckhead of the bow compartment **15-1**.



Remove the three marked **CP** screws from the tabs of **76-2**: these will be replaced by three longer screws in the next steps.



Take the guide rail **132-6** and place it onto the guide **76-2**, so that the holes of the two parts are aligned.

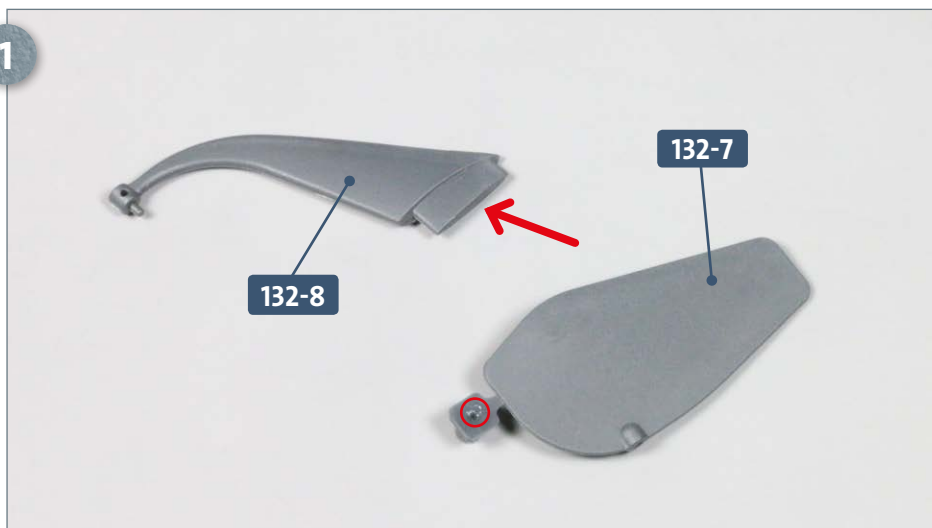


Attach the guide rail **132-6** to the guide **76-2** (and also part **76-1**, below it), by screwing in three **JP** screws.

Kit 132: The forward dive planes

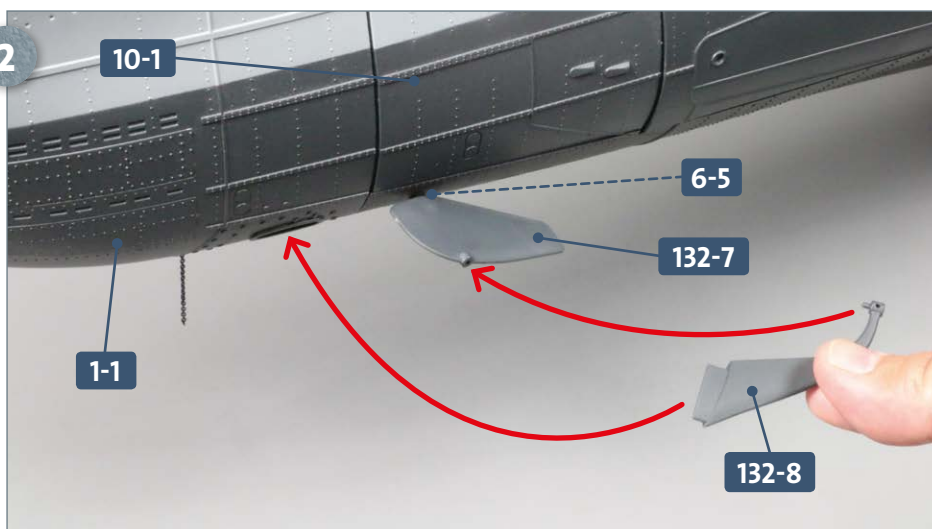
STAGE 2 → Attaching the forward dive planes

1



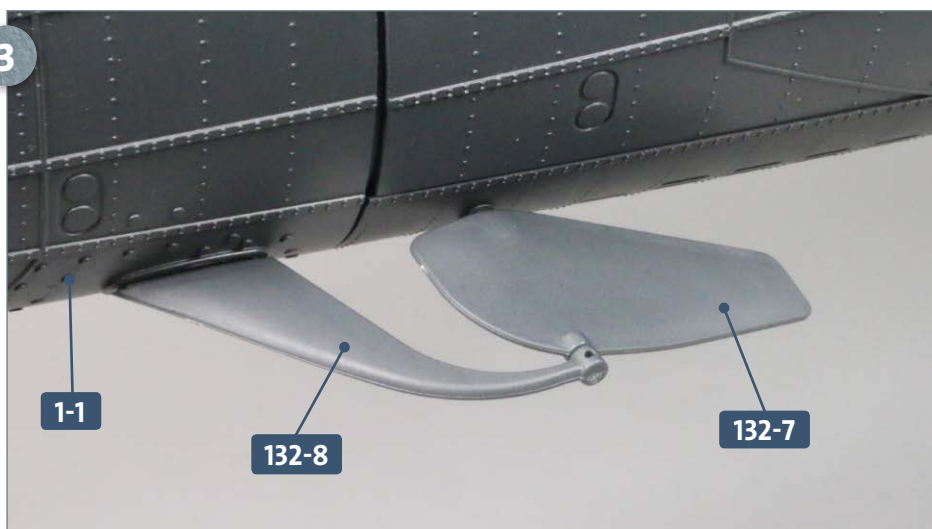
Have ready the forward port (L) dive plane **132-7** and protective bracket **132-8**. They can be distinguished from their starboard (R) counterparts as the protective bracket **132-8** has a continuous mounting tab (see arrow) and the appendage of the dive plane **132-7** has a number 2 stamped on it. Once you have correctly identified the part, use a craft knife to remove the appendage.

2



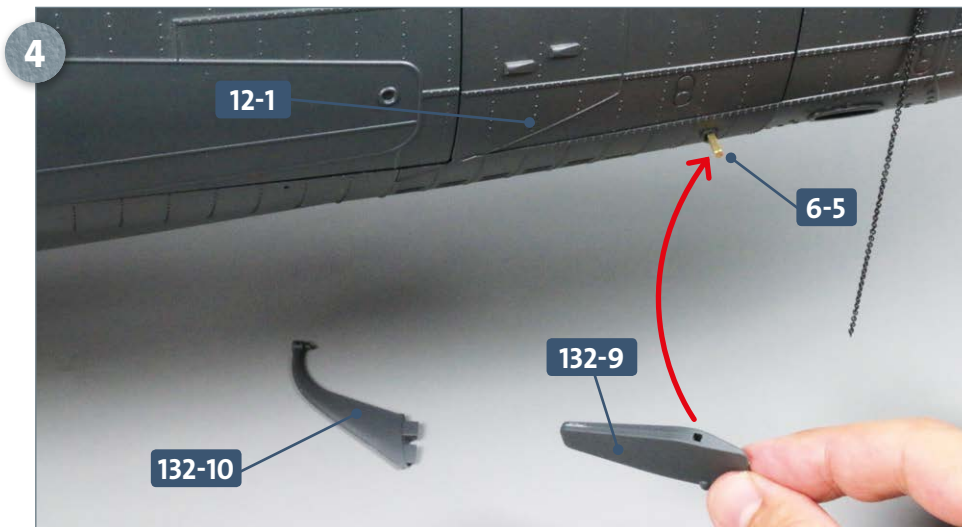
Apply a small amount of glue to the port (L) end of the shaft **6-5** and attach the port (L) dive plane **132-7**, as shown. Next, apply a little glue to the wide mounting tab of the port (L) protective bracket **132-8** and insert it into the slot of the port (L) section of the bow **1-1**, indicated by the arrow. The small peg of the bracket is inserted (without glue) into the hole of the dive plane.

3

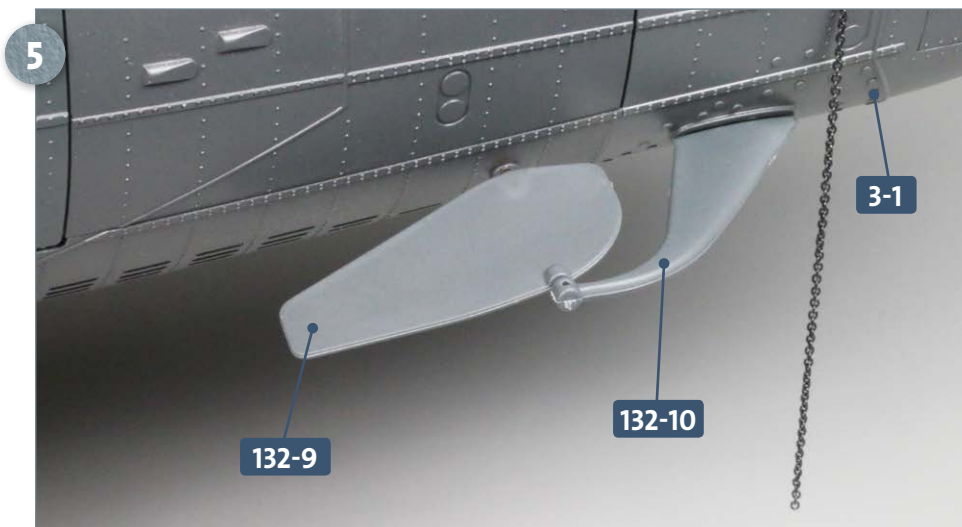


This photograph shows the port (L) protective bracket **132-8** correctly attached to the port (L) side bow **1-1** and to the port (L) dive plane **132-7**.

Kit 132: The forward dive planes



Switching now to the starboard (R) side of the model, have ready the forward starboard (R) dive plane **132-9** and its protective bracket **132-10**. Carefully detach the appendage with the stamped number 1 from the dive plane. Apply a little glue to the starboard (R) end of the shaft **6-5** and attach the starboard (R) dive plane **132-9** as indicated by the arrow.'



Apply glue to the two mounting tabs of the starboard (R) protective bracket **132-10** and insert them into the mount on the starboard (R) bow section **3-1**. The small peg on the bracket is inserted (without glue) into the slot in the dive plane **132-9**.

COMPLETED WORK



Both forward dive planes have now been attached, along with their protective brackets. The forward torpedo loading bay and box have also now been installed on the deckhead.